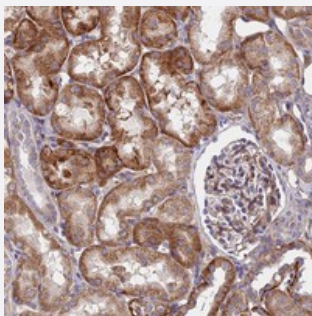


GPR113 polyclonal antibody

Catalog # PAB24067 Size 100 uL

Applications



Immunohistochemistry (Formalin/PFA-fixed paraffin-embedded sections)

Immunohistochemical staining of human kidney with GPR113 polyclonal antibody (Cat # PAB24067) shows distinct cytoplasmic positivity in tubular cells at 1:50-1:200 dilution.

Specification

Product Description	Rabbit polyclonal antibody raised against recombinant GPR113.
Immunogen	Recombinant protein corresponding to amino acids of human GPR113.
Sequence	CIPSTNLAYTAAWSPGEGSKASSFNESGSQCFVLAVQRCPMADTTYACDLQSLGLAPLRVPISITII QDGDITCPEDASVL TWNVTKAGHVAQAPCPESKRGIVRRLCGADG
Host	Rabbit
Reactivity	Human
Form	Liquid
Purification	Antigen affinity purification
Isotype	IgG
Recommend Usage	Immunohistochemistry (1:50-1:200) The optimal working dilution should be determined by the end user.
Storage Buffer	In PBS, pH 7.2 (40% glycerol, 0.02% sodium azide)

Storage Instruction

Store at 4°C. For long term storage store at -20°C.
Aliquot to avoid repeated freezing and thawing.

Note

This product contains sodium azide: a POISONOUS AND HAZARDOUS SUBSTANCE which should be handled by trained staff only.

Applications

- Immunohistochemistry (Formalin/PFA-fixed paraffin-embedded sections)

Immunohistochemical staining of human kidney with GPR113 polyclonal antibody (Cat # PAB24067) shows distinct cytoplasmic positivity in tubular cells at 1:50-1:200 dilution.

Gene Info — GPR113

Entrez GeneID[165082](#)**Protein Accession#**[Q8IZF5](#)**Gene Name**

GPR113

Gene Alias

FLJ16767, PGR23, hGPCR37

Gene Description

G protein-coupled receptor 113

Gene Ontology[Hyperlink](#)**Other Designations**

G protein-coupled receptor PGR23|G-protein coupled receptor 113|seven transmembrane helix receptor