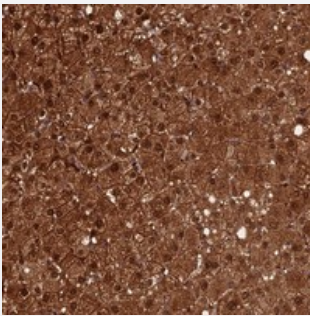


# CRTC3 polyclonal antibody

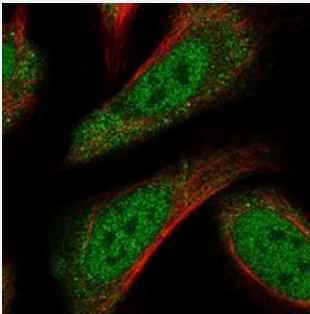
Catalog # PAB24056      Size 100 uL

## Applications



### Immunohistochemistry (Formalin/PFA-fixed paraffin-embedded sections)

Immunohistochemical staining of human liver with CRTC3 polyclonal antibody (Cat # PAB24056) shows strong cytoplasmic, membranous and nuclear positivity in hepatocytes.



### Immunofluorescence

Immunofluorescent staining of human cell line U-2 OS with CRTC3 polyclonal antibody (Cat # PAB24056) at 1-4 ug/mL dilution shows positivity in nucleus but not nucleoli and cytoplasm.

## Specification

Product Description	Rabbit polyclonal antibody raised against recombinant CRTC3.
Immunogen	Recombinant protein corresponding to amino acids of human CRTC3.
Sequence	HGLVERPSRNRFHPLHRRSGDKPGRQFDGSAFGANYSSQPLDESWPRQQPPWKDEKHPGFRLTSALN
Host	Rabbit
Reactivity	Human
Form	Liquid

<b>Purification</b>	Antigen affinity purification
<b>Isotype</b>	IgG
<b>Recommend Usage</b>	Immunohistochemistry (1:500-1:1000) Immunofluorescence (1-4 ug/mL) The optimal working dilution should be determined by the end user.
<b>Storage Buffer</b>	In PBS, pH 7.2 (40% glycerol, 0.02% sodium azide)
<b>Storage Instruction</b>	Store at 4°C. For long term storage store at -20°C. Aliquot to avoid repeated freezing and thawing.
<b>Note</b>	This product contains sodium azide: a POISONOUS AND HAZARDOUS SUBSTANCE which should be handled by trained staff only.

## Applications

- Immunohistochemistry (Formalin/PFA-fixed paraffin-embedded sections)

Immunohistochemical staining of human liver with CRTC3 polyclonal antibody (Cat # PAB24056) shows strong cytoplasmic, membranous and nuclear positivity in hepatocytes.

- Immunofluorescence

Immunofluorescent staining of human cell line U-2 OS with CRTC3 polyclonal antibody (Cat # PAB24056) at 1-4 ug/mL dilution shows positivity in nucleus but not nucleoli and cytoplasm.

## Gene Info — CRTC3

<b>Entrez GeneID</b>	<a href="#">64784</a>
<b>Protein Accession#</b>	<a href="#">Q6UUV7</a>
<b>Gene Name</b>	CRTC3
<b>Gene Alias</b>	FLJ21868, TORC3
<b>Gene Description</b>	CREB regulated transcription coactivator 3
<b>Omim ID</b>	<a href="#">608986</a>
<b>Gene Ontology</b>	<a href="#">Hyperlink</a>
<b>Other Designations</b>	transducer of regulated CREB protein 3 transducer of regulated cAMP response element-binding protein (CREB) 3

## Disease

- [Disease Progression](#)
- [Disease Susceptibility](#)
- [HIV Infections](#)
- [Tobacco Use Disorder](#)