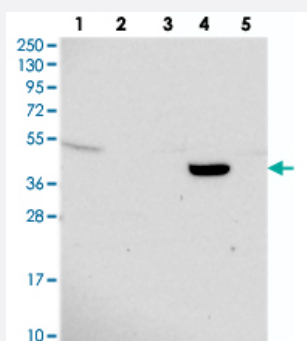


TMEM44 polyclonal antibody

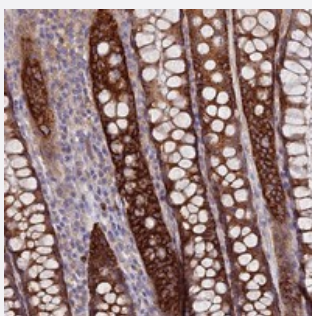
Catalog # PAB24055 Size 100 uL

Applications



Western Blot

Western blot analysis of Lane 1: RT-4, Lane 2: U-251 MG, Lane 3: Human Plasma, Lane 4: Liver, Lane 5: Tonsil with TMEM44 polyclonal antibody (Cat # PAB24055) at 1:250-1:500 dilution.



Immunohistochemistry (Formalin/PFA-fixed paraffin-embedded sections)

Immunohistochemical staining of human rectum with TMEM44 polyclonal antibody (Cat # PAB24055) shows strong cytoplasmic positivity in glandular cells at 1:200-1:500 dilution.

Specification

Product Description	Rabbit polyclonal antibody raised against recombinant TMEM44.
Immunogen	Recombinant protein corresponding to amino acids of human TMEM44.
Sequence	DTQALLTCAEKEEENQENLDWVPLTTLSHCKSLRTMTAISRYMELTIEPVQQAGCSATRLPGDGQ TSAGDASLQDPPSYPPVQVIRA
Host	Rabbit
Reactivity	Human
Form	Liquid

Purification	Antigen affinity purification
Isotype	IgG
Recommend Usage	Immunohistochemistry (1:200-1:500) Western Blot (1:250-1:500) The optimal working dilution should be determined by the end user.
Storage Buffer	In PBS, pH 7.2 (40% glycerol, 0.02% sodium azide)
Storage Instruction	Store at 4°C. For long term storage store at -20°C. Aliquot to avoid repeated freezing and thawing.
Note	This product contains sodium azide: a POISONOUS AND HAZARDOUS SUBSTANCE which should be handled by trained staff only.

Applications

- Western Blot

Western blot analysis of Lane 1: RT-4, Lane 2: U-251 MG, Lane 3: Human Plasma, Lane 4: Liver, Lane 5: Tonsil with TMEM44 polyclonal antibody (Cat # PAB24055) at 1:250-1:500 dilution.

- Immunohistochemistry (Formalin/PFA-fixed paraffin-embedded sections)

Immunohistochemical staining of human rectum with TMEM44 polyclonal antibody (Cat # PAB24055) shows strong cytoplasmic positivity in glandular cells at 1:200-1:500 dilution.

Gene Info — TMEM44

Entrez GeneID	93109
Protein Accession#	Q2T9K0
Gene Name	TMEM44
Gene Alias	DKFZp686O18124, MGC131692, MGC163169
Gene Description	transmembrane protein 44
Gene Ontology	Hyperlink
Other Designations	-