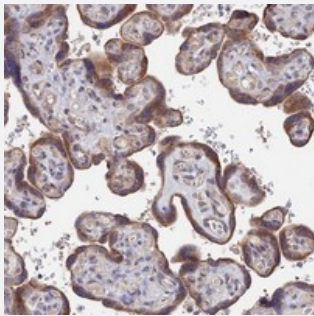


# ZNF320 polyclonal antibody

Catalog # PAB24052      Size 100 uL

## Applications



### Immunohistochemistry (Formalin/PFA-fixed paraffin-embedded sections)

Immunohistochemical staining of human placenta with ZNF320 polyclonal antibody (Cat # PAB24052) shows moderate cytoplasmic positivity in trophoblastic cells.

## Specification

<b>Product Description</b>	Rabbit polyclonal antibody raised against recombinant ZNF320.
<b>Immunogen</b>	Recombinant protein corresponding to amino acids of human ZNF320.
<b>Sequence</b>	GKVFSRLRSLLAEHQKIPFGDNCFKCNEYSKPSSI
<b>Host</b>	Rabbit
<b>Reactivity</b>	Human
<b>Form</b>	Liquid
<b>Purification</b>	Antigen affinity purification
<b>Isotype</b>	IgG
<b>Recommend Usage</b>	Immunohistochemistry (1:50-1:200) The optimal working dilution should be determined by the end user.
<b>Storage Buffer</b>	In PBS, pH 7.2 (40% glycerol, 0.02% sodium azide)
<b>Storage Instruction</b>	Store at 4°C. For long term storage store at -20°C. Aliquot to avoid repeated freezing and thawing.

**Note**

This product contains sodium azide: a POISONOUS AND HAZARDOUS SUBSTANCE which should be handled by trained staff only.

## Applications

- Immunohistochemistry (Formalin/PFA-fixed paraffin-embedded sections)

Immunohistochemical staining of human placenta with ZNF320 polyclonal antibody (Cat # PAB24052) shows moderate cytoplasmic positivity in trophoblastic cells.

## Gene Info — ZNF320

**Entrez GeneID** [162967](#)

**Protein Accession#** [A2RRD8](#)

**Gene Name** ZNF320

**Gene Alias** DKFZp686G16228, ZFPL

**Gene Description** zinc finger protein 320

**Omim ID** [606427](#)

**Gene Ontology** [Hyperlink](#)

**Gene Summary** ZNF320 encodes a Kruppel-like zinc finger protein. Members of this protein family are involved in activation or repression of transcription.[supplied by OMIM]

**Other Designations** zinc finger gene 320|zinc finger protein like