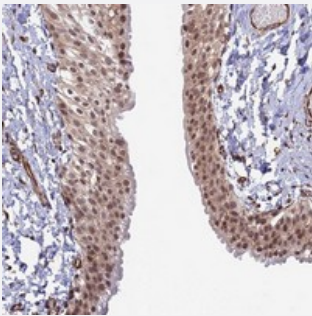


C16orf53 polyclonal antibody

Catalog # PAB24045

Size 100 uL

Applications



Immunohistochemistry (Formalin/PFA-fixed paraffin-embedded sections)

Immunohistochemical staining of human urinary bladder with C16orf53 polyclonal antibody (Cat # PAB24045) shows moderate nuclear and cytoplasmic positivity in urothelium at 1:200-1:500 dilution.

Specification

Product Description	Rabbit polyclonal antibody raised against recombinant C16orf53.
Immunogen	Recombinant protein corresponding to amino acids of human C16orf53.
Sequence	HMPTEFDDFDEPVT PKDSLIDRRRTPGSSARSQKREARLDKVLSDMKRHKKLEEQILRTGRDLFS LDSEDPSPASPPLRSSGSSLFPRQR
Host	Rabbit
Reactivity	Human
Form	Liquid
Purification	Antigen affinity purification
Isotype	IgG
Recommend Usage	Immunohistochemistry (1:200-1:500) The optimal working dilution should be determined by the end user.
Storage Buffer	In PBS, pH 7.2 (40% glycerol, 0.02% sodium azide)

Storage Instruction

Store at 4°C. For long term storage store at -20°C.
Aliquot to avoid repeated freezing and thawing.

Note

This product contains sodium azide: a POISONOUS AND HAZARDOUS SUBSTANCE which should be handled by trained staff only.

Applications

- Immunohistochemistry (Formalin/PFA-fixed paraffin-embedded sections)

Immunohistochemical staining of human urinary bladder with C16orf53 polyclonal antibody (Cat # PAB24045) shows moderate nuclear and cytoplasmic positivity in urothelium at 1:200-1:500 dilution.

Gene Info — C16orf53

Entrez GeneID[79447](#)**Protein Accession#**[Q9BTK6](#)**Gene Name**

C16orf53

Gene Alias

FLJ22459, GAS, MGC4606, PA1

Gene Description

chromosome 16 open reading frame 53

Gene Ontology[Hyperlink](#)**Gene Summary**

C16ORF53 (PA1) is a component of a Set1-like multiprotein histone methyltransferase complex (Cho et al., 2007 [PubMed 17500065]).[supplied by OMIM]

Other Designations

PTIP-associated 1 protein|glutamate-rich coactivator interacting with SRC1/NCOA1