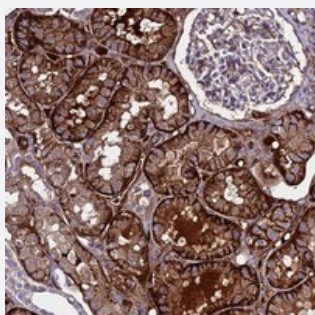


C19orf60 polyclonal antibody

Catalog # PAB24039 Size 100 uL

Applications



Immunohistochemistry (Formalin/PFA-fixed paraffin-embedded sections)

Immunohistochemical staining of human kidney with C19orf60 polyclonal antibody (Cat # PAB24039) shows strong cytoplasmic and membranous positivity in cells in tubules.

Specification

Product Description	Rabbit polyclonal antibody raised against recombinant C19orf60.
Immunogen	Recombinant protein corresponding to amino acids of human C19orf60.
Sequence	TVALLQLMETPELAGQEDAVRMQQLKMKVIKTMEASEVLQDLRFDAESAE
Host	Rabbit
Reactivity	Human
Form	Liquid
Purification	Antigen affinity purification
Isotype	IgG
Recommend Usage	Immunohistochemistry (1:200-1:500) The optimal working dilution should be determined by the end user.
Storage Buffer	In PBS, pH 7.2 (40% glycerol, 0.02% sodium azide)
Storage Instruction	Store at 4°C. For long term storage store at -20°C. Aliquot to avoid repeated freezing and thawing.

Note

This product contains sodium azide: a POISONOUS AND HAZARDOUS SUBSTANCE which should be handled by trained staff only.

Applications

- Immunohistochemistry (Formalin/PFA-fixed paraffin-embedded sections)

Immunohistochemical staining of human kidney with C19orf60 polyclonal antibody (Cat # PAB24039) shows strong cytoplasmic and membranous positivity in cells in tubules.

Gene Info — C19orf60

Entrez GeneID	55049
---------------	-----------------------

Protein Accession#	Q96EN9
--------------------	------------------------

Gene Name	C19orf60
-----------	----------

Gene Alias	FLJ20850, FLJ30108, FLJ34606, FLJ37391
------------	--

Gene Description	chromosome 19 open reading frame 60
------------------	-------------------------------------

Gene Ontology	Hyperlink
---------------	---------------------------

Other Designations	hypothetical protein LOC55049
--------------------	-------------------------------