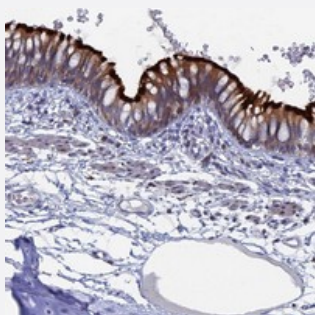


TMEM161A polyclonal antibody

Catalog # PAB24035 Size 100 uL

Applications



Immunohistochemistry (Formalin/PFA-fixed paraffin-embedded sections)

Immunohistochemical staining of human bronchus with TMEM161A polyclonal antibody (Cat # PAB24035) shows strong membranous and cytoplasmic positivity in respiratory epithelial cells.

Specification

Product Description	Rabbit polyclonal antibody raised against recombinant TMEM161A.
Immunogen	Recombinant protein corresponding to amino acids of human TMEM161A.
Sequence	KPIARDFLHQPPFGETRFSLLSDSAFD
Host	Rabbit
Reactivity	Human
Form	Liquid
Purification	Antigen affinity purification
Isotype	IgG
Recommend Usage	Immunohistochemistry (1:20-1:50) The optimal working dilution should be determined by the end user.
Storage Buffer	In PBS, pH 7.2 (40% glycerol, 0.02% sodium azide)
Storage Instruction	Store at 4°C. For long term storage store at -20°C. Aliquot to avoid repeated freezing and thawing.

Note

This product contains sodium azide: a POISONOUS AND HAZARDOUS SUBSTANCE which should be handled by trained staff only.

Applications

- Immunohistochemistry (Formalin/PFA-fixed paraffin-embedded sections)

Immunohistochemical staining of human bronchus with TMEM161A polyclonal antibody (Cat # PAB24035) shows strong membranous and cytoplasmic positivity in respiratory epithelial cells.

Gene Info — TMEM161A

Entrez GeneID	54929
---------------	-----------------------

Protein Accession#	Q9NX61
--------------------	------------------------

Gene Name	TMEM161A
-----------	----------

Gene Alias	AROS-29, FLJ20422, FLJ39645
------------	-----------------------------

Gene Description	transmembrane protein 161A
------------------	----------------------------

Gene Ontology	Hyperlink
---------------	---------------------------

Other Designations	-
--------------------	---