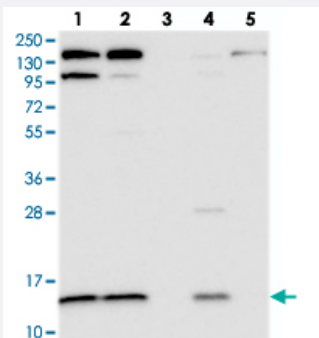


CMC1 polyclonal antibody

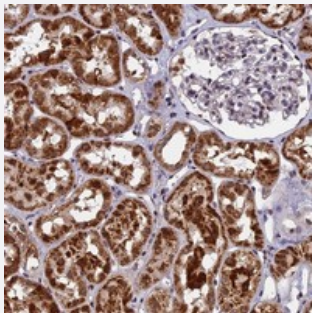
Catalog # PAB24032 Size 100 uL

Applications



Western Blot

Western blot analysis of Lane 1: RT-4, Lane 2: U-251 MG, Lane 3: Human Plasma, Lane 4: Liver, Lane 5: Tonsil with CMC1 polyclonal antibody (Cat # PAB24032).



Immunohistochemistry (Formalin/PFA-fixed paraffin-embedded sections)

Immunohistochemical staining of human kidney with CMC1 polyclonal antibody (Cat # PAB24032) shows strong cytoplasmic positivity in cells in tubules.

Specification

Product Description	Rabbit polyclonal antibody raised against recombinant CMC1.
Immunogen	Recombinant protein corresponding to amino acids of human CMC1.
Sequence	RCSEQVQDFTKCKNSGVLMVVKCRKENSALKECLTAYNDPAFYEECKMEYLKEREERFKTGI PTKKRLQKLPTSM
Host	Rabbit
Reactivity	Human
Form	Liquid

Purification	Antigen affinity purification
Isotype	IgG
Recommend Usage	Immunohistochemistry (1:200-1:500) Western Blot (1:250-1:500) The optimal working dilution should be determined by the end user.
Storage Buffer	In PBS, pH 7.2 (40% glycerol, 0.02% sodium azide)
Storage Instruction	Store at 4°C. For long term storage store at -20°C. Aliquot to avoid repeated freezing and thawing.
Note	This product contains sodium azide: a POISONOUS AND HAZARDOUS SUBSTANCE which should be handled by trained staff only.

Applications

- Western Blot

Western blot analysis of Lane 1: RT-4, Lane 2: U-251 MG, Lane 3: Human Plasma, Lane 4: Liver, Lane 5: Tonsil with CMC1 polyclonal antibody (Cat # PAB24032).

- Immunohistochemistry (Formalin/PFA-fixed paraffin-embedded sections)

Immunohistochemical staining of human kidney with CMC1 polyclonal antibody (Cat # PAB24032) shows strong cytoplasmic positivity in cells in tubules.

Gene Info — CMC1

Entrez GeneID	152100
Protein Accession#	Q7Z7K0
Gene Name	CMC1
Gene Alias	C3orf68, DKFZp779D0833, MGC61571
Gene Description	COX assembly mitochondrial protein homolog (S. cerevisiae)
Gene Ontology	Hyperlink
Other Designations	COX assembly mitochondrial protein homolog CX9C mitochondrial protein required for full expression of COX 1 mitochondrial metallochaperone-like protein