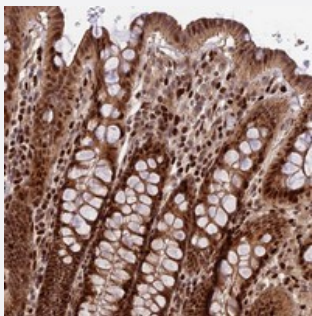


## C3orf62 polyclonal antibody

Catalog # PAB24031      Size 100 uL

### Applications



#### Immunohistochemistry (Formalin/PFA-fixed paraffin-embedded sections)

Immunohistochemical staining of human colon with C3orf62 polyclonal antibody (Cat # PAB24031) shows strong cytoplasmic and nuclear positivity in glandular cells at 1:50-1:200 dilution.

### Specification

<b>Product Description</b>	Rabbit polyclonal antibody raised against recombinant C3orf62.
<b>Immunogen</b>	Recombinant protein corresponding to amino acids of human C3orf62.
<b>Sequence</b>	CAPENENPAFATNHAPVNAKPHALCPERKPLTSKENVLMHSSILAPERESWRTAGEGENWRKE NLRKDMERDLKADSNMPLNNSSQEVTKDLLDMIDH
<b>Host</b>	Rabbit
<b>Reactivity</b>	Human
<b>Form</b>	Liquid
<b>Purification</b>	Antigen affinity purification
<b>Isotype</b>	IgG
<b>Recommend Usage</b>	Immunohistochemistry (1:50-1:200) The optimal working dilution should be determined by the end user.
<b>Storage Buffer</b>	In PBS, pH 7.2 (40% glycerol, 0.02% sodium azide)

**Storage Instruction**

Store at 4°C. For long term storage store at -20°C.  
Aliquot to avoid repeated freezing and thawing.

**Note**

This product contains sodium azide: a POISONOUS AND HAZARDOUS SUBSTANCE which should be handled by trained staff only.

## Applications

- Immunohistochemistry (Formalin/PFA-fixed paraffin-embedded sections)

Immunohistochemical staining of human colon with C3orf62 polyclonal antibody (Cat # PAB24031) shows strong cytoplasmic and nuclear positivity in glandular cells at 1:50-1:200 dilution.

## Gene Info — C3orf62

**Entrez GeneID**[375341](#)**Protein Accession#**[Q6ZUJ4](#)**Gene Name**

C3orf62

**Gene Alias**

FLJ43654, MGC23381, MGC61663, MGC62079

**Gene Description**

chromosome 3 open reading frame 62

**Gene Ontology**[Hyperlink](#)**Other Designations**

hypothetical protein LOC375341