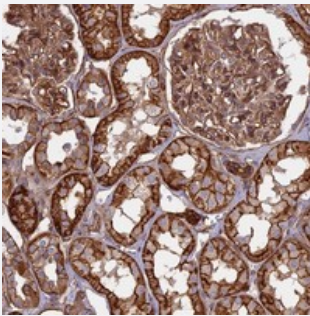


C20orf152 polyclonal antibody

Catalog # PAB24020 Size 100 uL

Applications



Immunohistochemistry (Formalin/PFA-fixed paraffin-embedded sections)

Immunohistochemical staining of human kidney with C20orf152 polyclonal antibody (Cat # PAB24020) shows strong cytoplasmic and membranous positivity in cells in tubules and cells in glomeruli.

Specification

Product Description	Rabbit polyclonal antibody raised against recombinant C20orf152.
Immunogen	Recombinant protein corresponding to amino acids of human C20orf152.
Sequence	IRVCKMFRQGLRGFREYQIIETAHWKHPIFSFWDKKMQSRVTFDTMDFAEEGHFPPKAIQIMQKKP SWRTEDEIQAVCNILQVLDSHRNYAEPLQLLLAKVMRFERFGR
Host	Rabbit
Reactivity	Human
Form	Liquid
Purification	Antigen affinity purification
Isotype	IgG
Recommend Usage	Immunohistochemistry (1:200-1:500) The optimal working dilution should be determined by the end user.
Storage Buffer	In PBS, pH 7.2 (40% glycerol, 0.02% sodium azide)

Storage Instruction

Store at 4°C. For long term storage store at -20°C.
Aliquot to avoid repeated freezing and thawing.

Note

This product contains sodium azide: a POISONOUS AND HAZARDOUS SUBSTANCE which should be handled by trained staff only.

Applications

- Immunohistochemistry (Formalin/PFA-fixed paraffin-embedded sections)

Immunohistochemical staining of human kidney with C20orf152 polyclonal antibody (Cat # PAB24020) shows strong cytoplasmic and membranous positivity in cells in tubules and cells in glomeruli.

Gene Info — C20orf152

Entrez GeneID[140894](#)**Protein Accession#**[Q96M20](#)**Gene Name**

C20orf152

Gene Alias

MGC138880, dJ954P9.1

Gene Description

chromosome 20 open reading frame 152

Gene Ontology[Hyperlink](#)**Other Designations**

OTTHUMP00000030816|hypothetical protein LOC140894