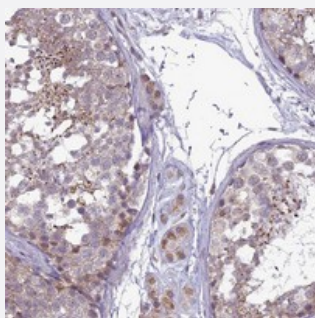


# C14orf1 polyclonal antibody

Catalog # PAB24019      Size 100 uL

## Applications



### Immunohistochemistry (Formalin/PFA-fixed paraffin-embedded sections)

Immunohistochemical staining of human testis with C14orf1 polyclonal antibody (Cat # PAB24019) shows distinct staining in spermatids.

## Specification

<b>Product Description</b>	Rabbit polyclonal antibody raised against recombinant C14orf1.
<b>Immunogen</b>	Recombinant protein corresponding to amino acids of human C14orf1.
<b>Sequence</b>	QSFRDHTFLYEKLYTGKPNLVNGLQARTF
<b>Host</b>	Rabbit
<b>Reactivity</b>	Human
<b>Form</b>	Liquid
<b>Purification</b>	Antigen affinity purification
<b>Isotype</b>	IgG
<b>Recommend Usage</b>	Immunohistochemistry (1:20-1:50) The optimal working dilution should be determined by the end user.
<b>Storage Buffer</b>	In PBS, pH 7.2 (40% glycerol, 0.02% sodium azide)
<b>Storage Instruction</b>	Store at 4°C. For long term storage store at -20°C. Aliquot to avoid repeated freezing and thawing.

**Note**

This product contains sodium azide: a POISONOUS AND HAZARDOUS SUBSTANCE which should be handled by trained staff only.

## Applications

- Immunohistochemistry (Formalin/PFA-fixed paraffin-embedded sections)

Immunohistochemical staining of human testis with C14orf1 polyclonal antibody (Cat # PAB24019) shows distinct staining in spermatids.

## Gene Info — C14orf1

Entrez GeneID	<a href="#">11161</a>
---------------	-----------------------

Protein Accession#	<a href="#">Q9UKR5</a>
--------------------	------------------------

Gene Name	C14orf1
-----------	---------

Gene Alias	ERG28, NET51
------------	--------------

Gene Description	chromosome 14 open reading frame 1
------------------	------------------------------------

Omim ID	<a href="#">604576</a>
---------	------------------------

Gene Ontology	<a href="#">Hyperlink</a>
---------------	---------------------------

Other Designations	hypothetical protein LOC11161
--------------------	-------------------------------