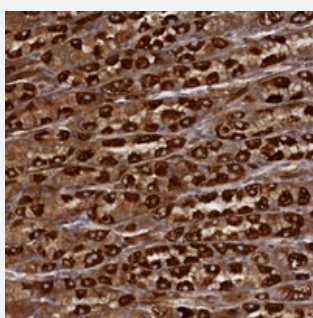


TMEM196 polyclonal antibody

Catalog # PAB24017 Size 100 uL

Applications



Immunohistochemistry (Formalin/PFA-fixed paraffin-embedded sections)

Immunohistochemical staining of human stomach with TMEM196 polyclonal antibody (Cat # PAB24017) shows strong cytoplasmic positivity in parietal cells at 1:50-1:200 dilution.

Specification

Product Description	Rabbit polyclonal antibody raised against recombinant TMEM196.
Immunogen	Recombinant protein corresponding to amino acids of human TMEM196.
Sequence	LTCRLASYEQRRMFSEREHSLHHSHEMAEKEITDNMSNGGPQLIFNGRV
Host	Rabbit
Reactivity	Human
Form	Liquid
Purification	Antigen affinity purification
Isotype	IgG
Recommend Usage	Immunohistochemistry (1:50-1:200) The optimal working dilution should be determined by the end user.
Storage Buffer	In PBS, pH 7.2 (40% glycerol, 0.02% sodium azide)
Storage Instruction	Store at 4°C. For long term storage store at -20°C. Aliquot to avoid repeated freezing and thawing.

Note

This product contains sodium azide: a POISONOUS AND HAZARDOUS SUBSTANCE which should be handled by trained staff only.

Applications

- Immunohistochemistry (Formalin/PFA-fixed paraffin-embedded sections)

Immunohistochemical staining of human stomach with TMEM196 polyclonal antibody (Cat # PAB24017) shows strong cytoplasmic positivity in parietal cells at 1:50-1:200 dilution.

Gene Info — TMEM196

Entrez GeneID [256130](#)

Protein Accession# [Q5HYL7](#)

Gene Name TMEM196

Gene Alias DKFZp686H19205, DKFZp686K0753, MGC42090

Gene Description transmembrane protein 196

Gene Ontology [Hyperlink](#)

Other Designations -

Publication Reference

- [TMEM196 inhibits lung cancer metastasis by regulating the Wnt/ \$\beta\$ -catenin signaling pathway.](#)

Jianping Chen, Dandan Wang, Hongqiang Chen, Jin Gu, Xiao Jiang, Fei Han, Jia Cao, Wenbin Liu, Jinyi Liu.

Journal of Cancer Research and Clinical Oncology 2023 Feb; 149(2):653.

Application: IF, IHC-P, Human, Mouse, A549 cells, Human normal bronchial epithelial, LTEP-a-2, SPC-A-1 cells