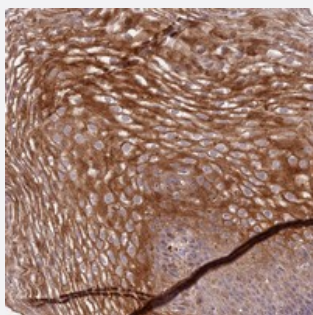


DEFB125 polyclonal antibody

Catalog # PAB24006 Size 100 uL

Applications



Immunohistochemistry (Formalin/PFA-fixed paraffin-embedded sections)

Immunohistochemical staining of human esophagus with DEFB125 polyclonal antibody (Cat # PAB24006) shows moderate cytoplasmic positivity in squamous epithelial cells at 1:50-1:200 dilution.

Specification

| | |
|----------------------------|---|
| Product Description | Rabbit polyclonal antibody raised against recombinant DEFB125. |
| Immunogen | Recombinant protein corresponding to amino acids of human DEFB125. |
| Sequence | PVSMLNDLITFDTTKFGETMTPE TNPETTMPPSEATTPETTMPPSETATSETMPPPSQTALTHN |
| Host | Rabbit |
| Reactivity | Human |
| Form | Liquid |
| Purification | Antigen affinity purification |
| Isotype | IgG |
| Recommend Usage | Immunohistochemistry (1:50-1:200) The optimal working dilution should be determined by the end user. |
| Storage Buffer | In PBS, pH 7.2 (40% glycerol, 0.02% sodium azide) |
| Storage Instruction | Store at 4°C. For long term storage store at -20°C. Aliquot to avoid repeated freezing and thawing. |

Note

This product contains sodium azide: a POISONOUS AND HAZARDOUS SUBSTANCE which should be handled by trained staff only.

Applications

- Immunohistochemistry (Formalin/PFA-fixed paraffin-embedded sections)

Immunohistochemical staining of human esophagus with DEFB125 polyclonal antibody (Cat # PAB24006) shows moderate cytoplasmic positivity in squamous epithelial cells at 1:50-1:200 dilution.

Gene Info — DEFB125

Entrez GeneID [245938](#)

Protein Accession# [Q8N687](#)

Gene Name DEFB125

Gene Alias DEFB-25, MGC57449

Gene Description defensin, beta 125

Gene Ontology [Hyperlink](#)

Gene Summary Defensins are cysteine-rich cationic polypeptides that are important in the host immunologic response to invading microorganisms. The protein encoded by this gene is secreted and is a member of the beta defensin protein family. Beta defensin genes are found in several clusters throughout the genome, with this gene mapping to a cluster at 20p13. [provided by RefSeq]

Other Designations beta defensin 25