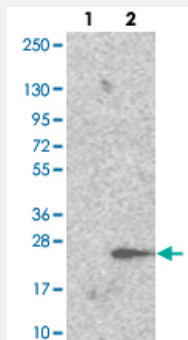


TRAPPC6A polyclonal antibody

Catalog # PAB24001 Size 100 uL

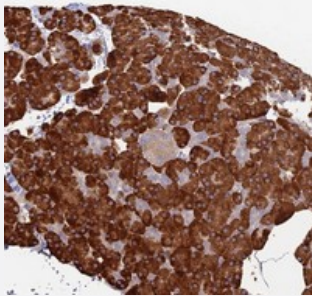
Applications



Western Blot (Transfected lysate)

Western blot analysis of Lane 1: Negative control (vector only transfected HEK293T lysate).

Lane 2: Over-expression lysate (Co-expressed with a C-terminal myc-DDK tag (~3.1 kDa) in mammalian HEK293T cells with TRAPPC6A polyclonal antibody (Cat # PAB24001).



Immunohistochemistry (Formalin/PFA-fixed paraffin-embedded sections)

Immunohistochemical staining of human pancreas with TRAPPC6A polyclonal antibody (Cat # PAB24001) shows strong cytoplasmic positivity in exocrine glandular cells.

Specification

Product Description	Rabbit polyclonal antibody raised against recombinant TRAPPC6A.
Immunogen	Recombinant protein corresponding to amino acids of human TRAPPC6A.
Sequence	VGQALGERLPRETLAFREELDVLFCKDLWWAVFQKQMDSLR
Host	Rabbit
Reactivity	Human
Form	Liquid
Purification	Antigen affinity purification

Isotype	IgG
Recommend Usage	Immunohistochemistry (1:200-1:500) The optimal working dilution should be determined by the end user.
Storage Buffer	In PBS, pH 7.2 (40% glycerol, 0.02% sodium azide)
Storage Instruction	Store at 4°C. For long term storage store at -20°C. Aliquot to avoid repeated freezing and thawing.
Note	This product contains sodium azide: a POISONOUS AND HAZARDOUS SUBSTANCE which should be handled by trained staff only.

Applications

- Western Blot (Transfected lysate)

Western blot analysis of Lane 1: Negative control (vector only transfected HEK293T lysate).

Lane 2: Over-expression lysate (Co-expressed with a C-terminal myc-DDK tag (~3.1 kDa) in mammalian HEK293T cells with TRAPPC6A polyclonal antibody (Cat # PAB24001).

- Immunohistochemistry (Formalin/PFA-fixed paraffin-embedded sections)

Immunohistochemical staining of human pancreas with TRAPPC6A polyclonal antibody (Cat # PAB24001) shows strong cytoplasmic positivity in exocrine glandular cells.

Gene Info — TRAPPC6A

Entrez GeneID	79090
Protein Accession#	O75865
Gene Name	TRAPPC6A
Gene Alias	HSPC289, MGC2650, TRS33
Gene Description	trafficking protein particle complex 6A
Omim ID	610396
Gene Ontology	Hyperlink
Gene Summary	TRAPPC6A is a subunit of the TRAPP I and II complexes (Gwynn et al., 2006 [PubMed 16697553]).[supplied by OMIM]
Other Designations	-