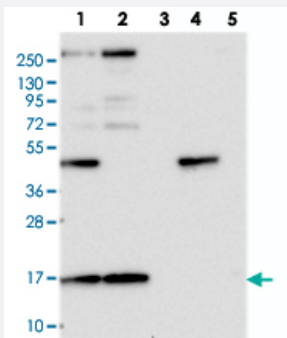


# RPS19BP1 polyclonal antibody

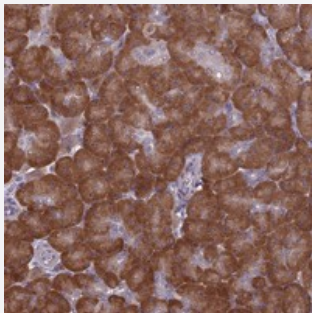
Catalog # PAB23995      Size 100 uL

## Applications



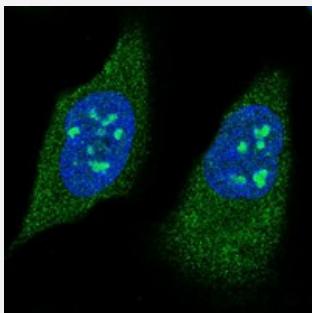
### Western Blot

Western blot analysis of Lane 1: RT-4, Lane 2: U-251 MG, Lane 3: Human Plasma, Lane 4: Liver, Lane 5: Tonsil with RPS19BP1 polyclonal antibody (Cat # PAB23995) at 1:250-1:500 dilution.



### Immunohistochemistry (Formalin/PFA-fixed paraffin-embedded sections)

Immunohistochemical staining of human pancreas with RPS19BP1 polyclonal antibody (Cat # PAB23995) shows strong cytoplasmic with additional nucleolar positivity in exocrine glandular cells at 1:500-1:1000 dilution.



### Immunofluorescence

Immunofluorescent staining of human cell line U-2 OS with RPS19BP1 polyclonal antibody (Cat # PAB23995) at 1-4 ug/mL dilution shows positivity in nucleoli and cytoplasm.

## Specification

### Product Description

Rabbit polyclonal antibody raised against recombinant RPS19BP1.

### Immunogen

Recombinant protein corresponding to amino acids of human RPS19BP1.

Sequence	CRDHLRVNLKFLTRTRSTVAESVSQQILRQNRGRKACDRPVAKTKKKKAEGTVFTEEDFQKFQQ EYFGS
Host	Rabbit
Reactivity	Human
Form	Liquid
Purification	Antigen affinity purification
Isotype	IgG
Recommend Usage	Immunohistochemistry (1:500-1:1000) Western Blot (1:250-1:500) Immunofluorescence (1-4 ug/mL) The optimal working dilution should be determined by the end user.
Storage Buffer	In PBS, pH 7.2 (40% glycerol, 0.02% sodium azide)
Storage Instruction	Store at 4°C. For long term storage store at -20°C. Aliquot to avoid repeated freezing and thawing.
Note	This product contains sodium azide: a POISONOUS AND HAZARDOUS SUBSTANCE which should be handled by trained staff only.

## Applications

- Western Blot

Western blot analysis of Lane 1: RT-4, Lane 2: U-251 MG, Lane 3: Human Plasma, Lane 4: Liver, Lane 5: Tonsil with RPS19BP1 polyclonal antibody (Cat # PAB23995) at 1:250-1:500 dilution.

- Immunohistochemistry (Formalin/PFA-fixed paraffin-embedded sections)

Immunohistochemical staining of human pancreas with RPS19BP1 polyclonal antibody (Cat # PAB23995) shows strong cytoplasmic with additional nucleolar positivity in exocrine glandular cells at 1:500-1:1000 dilution.

- Immunofluorescence

Immunofluorescent staining of human cell line U-2 OS with RPS19BP1 polyclonal antibody (Cat # PAB23995) at 1-4 ug/mL dilution shows positivity in nucleoli and cytoplasm.

## Gene Info — RPS19BP1

Entrez GeneID [91582](#)

Protein Accession# [Q86WX3](#)

Gene Name	RPS19BP1
Gene Alias	AROS, FLJ21770, MGC52010, S19BP, dJ1104E15.4
Gene Description	ribosomal protein S19 binding protein 1
Omim ID	<a href="#">610225</a>
Gene Ontology	<a href="#">Hyperlink</a>
Other Designations	OTTHUMP00000028579 S19 binding protein homolog of mouse S19 binding protein