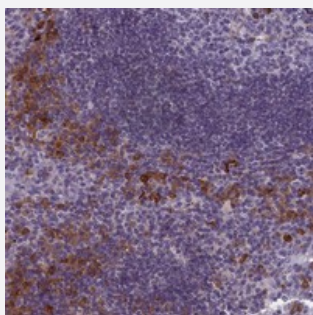


# CNEP1R1 polyclonal antibody

Catalog # PAB23989

Size 100 uL

## Applications



### Immunohistochemistry (Formalin/PFA-fixed paraffin-embedded sections)

Immunohistochemical staining of human tonsil with CNEP1R1 polyclonal antibody (Cat # PAB23989) shows strong cytoplasmic positivity in subsets of cells outside germinal center at 1:20-1:50 dilution.

## Specification

<b>Product Description</b>	Rabbit polyclonal antibody raised against recombinant CNEP1R1.
<b>Immunogen</b>	Recombinant protein corresponding to amino acids of human CNEP1R1.
<b>Sequence</b>	MNSLEQAEDLKAFERRLTEYIHCLQPATGRWRSVLLHII
<b>Host</b>	Rabbit
<b>Reactivity</b>	Human
<b>Form</b>	Liquid
<b>Purification</b>	Antigen affinity purification
<b>Isotype</b>	IgG
<b>Recommend Usage</b>	Immunohistochemistry (1:20-1:50) The optimal working dilution should be determined by the end user.
<b>Storage Buffer</b>	In PBS, pH 7.2 (40% glycerol, 0.02% sodium azide)
<b>Storage Instruction</b>	Store at 4°C. For long term storage store at -20°C. Aliquot to avoid repeated freezing and thawing.

**Note**

This product contains sodium azide: a POISONOUS AND HAZARDOUS SUBSTANCE which should be handled by trained staff only.

## Applications

- Immunohistochemistry (Formalin/PFA-fixed paraffin-embedded sections)

Immunohistochemical staining of human tonsil with CNEP1R1 polyclonal antibody (Cat # PAB23989) shows strong cytoplasmic positivity in subsets of cells outside germinal center at 1:20-1:50 dilution.

## Gene Info — CNEP1R1

Entrez GeneID	<a href="#">255919</a>
Protein Accession#	<a href="#">Q8N9A8</a>
Gene Name	CNEP1R1
Gene Alias	C16orf69, NEP1-R1, TMEM188, TMP125
Gene Description	CTD nuclear envelope phosphatase 1 regulatory subunit 1
Gene Ontology	<a href="#">Hyperlink</a>
Other Designations	nuclear envelope phosphatase 1-regulatory subunit 1; nuclear envelope phosphatase-regulatory subunit 1; transmembrane protein 188