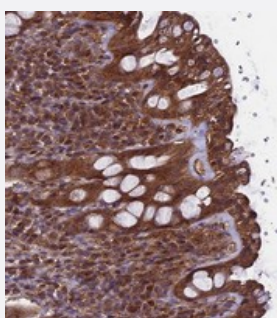


TTLL10 polyclonal antibody

Catalog # PAB23970 Size 100 uL

Applications



Immunohistochemistry (Formalin/PFA-fixed paraffin-embedded sections)

Immunohistochemical staining of human rectum with TTLL10 polyclonal antibody (Cat # PAB23970) shows moderate cytoplasmic positivity in glandular cells at 1:50-1:200 dilution.

Specification

Product Description	Rabbit polyclonal antibody raised against recombinant TTLL10.
Immunogen	Recombinant protein corresponding to amino acids of human TTLL10.
Sequence	KPTASNQGKGIFLLRNQEEVAALQAKTRSMEDDPIHHKTPFRGPQARVVQRYIQNPLLVDGRKFD VRSYLLIACTTPYMIFFGHGYARLTLSLYDPHSSDLG
Host	Rabbit
Reactivity	Human
Form	Liquid
Purification	Antigen affinity purification
Isotype	IgG
Recommend Usage	Immunohistochemistry (1:50-1:200) The optimal working dilution should be determined by the end user.
Storage Buffer	In PBS, pH 7.2 (40% glycerol, 0.02% sodium azide)

Storage Instruction

Store at 4°C. For long term storage store at -20°C.
Aliquot to avoid repeated freezing and thawing.

Note

This product contains sodium azide: a POISONOUS AND HAZARDOUS SUBSTANCE which should be handled by trained staff only.

Applications

- Immunohistochemistry (Formalin/PFA-fixed paraffin-embedded sections)

Immunohistochemical staining of human rectum with TTLL10 polyclonal antibody (Cat # PAB23970) shows moderate cytoplasmic positivity in glandular cells at 1:50-1:200 dilution.

Gene Info — TTLL10

Entrez GeneID[254173](#)**Protein Accession#**[Q6ZVT0](#)**Gene Name**

TTLL10

Gene Alias

FLJ36119, FLJ42131, TTLL5

Gene Description

tubulin tyrosine ligase-like family, member 10

Gene Ontology[Hyperlink](#)**Gene Summary**

O

Other Designations

OTTHUMP00000000973|OTTHUMP00000044099|tubulin tyrosine ligase-like family, member 5