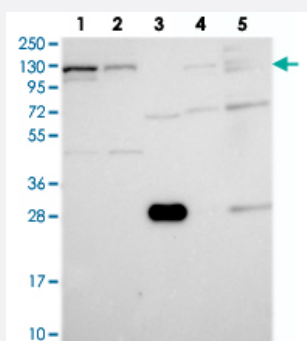


ARHGEF18 polyclonal antibody

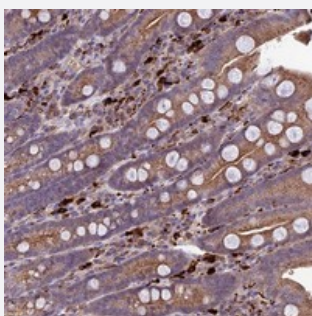
Catalog # PAB23969 Size 100 uL

Applications



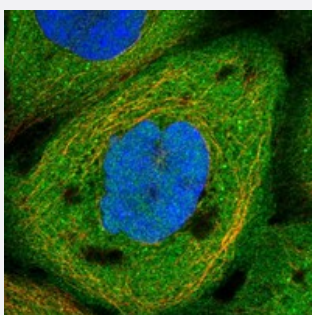
Western Blot

Western blot analysis of Lane 1: RT-4, Lane 2: U-251 MG, Lane 3: Human Plasma, Lane 4: Liver, Lane 5: Tonsil with ARHGEF18 polyclonal antibody (Cat # PAB23969) at 1:250-1:500 dilution.



Immunohistochemistry (Formalin/PFA-fixed paraffin-embedded sections)

Immunohistochemical staining of human duodenum with ARHGEF18 polyclonal antibody (Cat # PAB23969) shows moderate cytoplasmic positivity in glandular cells at 1:200-1:500 dilution.



Immunofluorescence

Immunofluorescent staining of human cell line A-431 with ARHGEF18 polyclonal antibody (Cat # PAB23969) at 1-4 ug/mL dilution shows positivity in plasma membrane and cytoplasm.

Specification

Product Description

Rabbit polyclonal antibody raised against recombinant ARHGEF18.

Immunogen

Recombinant protein corresponding to amino acids of human ARHGEF18.

Sequence	RYPTHFLSTNSVLASVTASLKEHPRGTLLSDGSPALSRNVGMTVSQKGGPQPTPSPAGPGTQLG PITGEMDEADSAFLKFKQTADDLSLTSPNTESI
Host	Rabbit
Reactivity	Human
Form	Liquid
Purification	Antigen affinity purification
Isotype	IgG
Recommend Usage	Immunohistochemistry (1:200-1:500) Western Blot (1:250-1:500) Immunofluorescence (1-4 ug/mL) The optimal working dilution should be determined by the end user.
Storage Buffer	In PBS, pH 7.2 (40% glycerol, 0.02% sodium azide)
Storage Instruction	Store at 4°C. For long term storage store at -20°C. Aliquot to avoid repeated freezing and thawing.
Note	This product contains sodium azide: a POISONOUS AND HAZARDOUS SUBSTANCE which should be handled by trained staff only.

Applications

- Western Blot

Western blot analysis of Lane 1: RT-4, Lane 2: U-251 MG, Lane 3: Human Plasma, Lane 4: Liver, Lane 5: Tonsil with ARHGEF18 polyclonal antibody (Cat # PAB23969) at 1:250-1:500 dilution.

- Immunohistochemistry (Formalin/PFA-fixed paraffin-embedded sections)

Immunohistochemical staining of human duodenum with ARHGEF18 polyclonal antibody (Cat # PAB23969) shows moderate cytoplasmic positivity in glandular cells at 1:200-1:500 dilution.

- Immunofluorescence

Immunofluorescent staining of human cell line A-431 with ARHGEF18 polyclonal antibody (Cat # PAB23969) at 1-4 ug/mL dilution shows positivity in plasma membrane and cytoplasm.

Gene Info — ARHGEF18

Entrez GeneID [23370](#)

Protein Accession# [Q6ZSZ5](#)

Gene Name	ARHGEF18
Gene Alias	KIAA0521, MGC15913, P114-RhoGEF
Gene Description	rho/rac guanine nucleotide exchange factor (GEF) 18
Gene Ontology	Hyperlink
Gene Summary	<p>Rho GTPases are GTP binding proteins that regulate a wide spectrum of cellular functions. These cellular processes include cytoskeletal rearrangements, gene transcription, cell growth and motility. Activation of Rho GTPases is under the direct control of guanine nucleotide exchange factors (GEFs). The protein encoded by this gene is a guanine nucleotide exchange factor and belongs to the Rho GTPase GEF family. Family members share a common feature, a Dbl (DH) homology domain followed by a pleckstrin (PH) homology domain. Alternatively spliced transcript variants encoding different isoforms have been identified. [provided by RefSeq]</p>
Other Designations	P114-RHO-GEF Rho-specific guanine nucleotide exchange factor p114