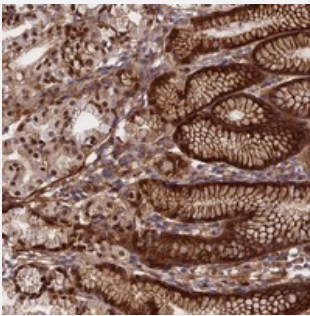


# C20orf151 polyclonal antibody

Catalog # PAB23960      Size 100 uL

## Applications



### Immunohistochemistry (Formalin/PFA-fixed paraffin-embedded sections)

Immunohistochemical staining of human stomach with C20orf151 polyclonal antibody (Cat # PAB23960) shows distinct cytoplasmic, membranous and nuclear positivity in glandular cells at 1:500-1:1000 dilution.

## Specification

Product Description	Rabbit polyclonal antibody raised against recombinant C20orf151.
Immunogen	Recombinant protein corresponding to amino acids of human C20orf151.
Sequence	LKAREAEAWEEPTELLGLPSALAGMQDLRLEGALHLLLAQQQLRARARAGSVRPRGQPTPGEM LPSLPVGSDSEGPENEGTRAALAAAGLSGGRH
Host	Rabbit
Reactivity	Human
Form	Liquid
Purification	Antigen affinity purification
Isotype	IgG
Recommend Usage	Immunohistochemistry (1:500-1:1000) The optimal working dilution should be determined by the end user.
Storage Buffer	In PBS, pH 7.2 (40% glycerol, 0.02% sodium azide)

**Storage Instruction**

Store at 4°C. For long term storage store at -20°C.  
Aliquot to avoid repeated freezing and thawing.

**Note**

This product contains sodium azide: a POISONOUS AND HAZARDOUS SUBSTANCE which should be handled by trained staff only.

## Applications

- Immunohistochemistry (Formalin/PFA-fixed paraffin-embedded sections)

Immunohistochemical staining of human stomach with C20orf151 polyclonal antibody (Cat # PAB23960) shows distinct cytoplasmic, membranous and nuclear positivity in glandular cells at 1:500-1:1000 dilution.

## Gene Info — C20orf151

**Entrez GeneID**[140893](#)**Protein Accession#**[Q8NC74](#)**Gene Name**

C20orf151

**Gene Alias**

dJ908M14.3

**Gene Description**

chromosome 20 open reading frame 151

**Gene Ontology**[Hyperlink](#)**Other Designations**

OTTHUMP00000031483|hypothetical protein LOC140893