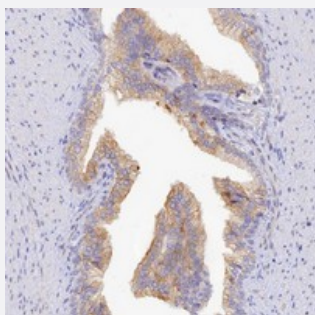


TCHHL1 polyclonal antibody

Catalog # PAB23957 Size 100 uL

Applications



Immunohistochemistry (Formalin/PFA-fixed paraffin-embedded sections)

Immunohistochemical staining of human prostate with TCHHL1 polyclonal antibody (Cat # PAB23957) shows moderate cytoplasmic positivity in glandular cells.

Specification

Product Description	Rabbit polyclonal antibody raised against recombinant TCHHL1.
Immunogen	Recombinant protein corresponding to amino acids of human TCHHL1.
Sequence	KHSNIQEPPLQREDEPSSQHADLPEQAAARSPSQTQKSTDSKDVCRMFDTQEPGKDADQTPAK TKNLGEPEDYGR TSETQEKECETKDLPVQYGSRN
Host	Rabbit
Reactivity	Human
Form	Liquid
Purification	Antigen affinity purification
Isotype	IgG
Recommend Usage	Immunohistochemistry (1:500-1:1000) The optimal working dilution should be determined by the end user.
Storage Buffer	In PBS, pH 7.2 (40% glycerol, 0.02% sodium azide)

Storage Instruction

Store at 4°C. For long term storage store at -20°C.
Aliquot to avoid repeated freezing and thawing.

Note

This product contains sodium azide: a POISONOUS AND HAZARDOUS SUBSTANCE which should be handled by trained staff only.

Applications

- Immunohistochemistry (Formalin/PFA-fixed paraffin-embedded sections)

Immunohistochemical staining of human prostate with TCHHL1 polyclonal antibody (Cat # PAB23957) shows moderate cytoplasmic positivity in glandular cells.

Gene Info — TCHHL1

Entrez GeneID[126637](#)**Protein Accession#**[Q5QJ38](#)**Gene Name**

TCHHL1

Gene Alias

S100A17, THHL1, basalin

Gene Description

trichohyalin-like 1

Gene Ontology[Hyperlink](#)**Other Designations**

S100 calcium binding protein A17|intermediate filament-associated protein