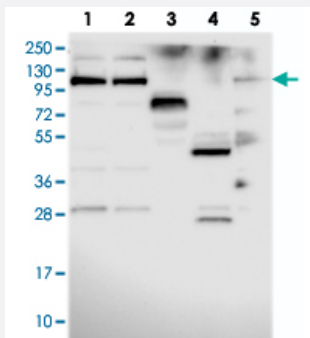


C19orf29 polyclonal antibody

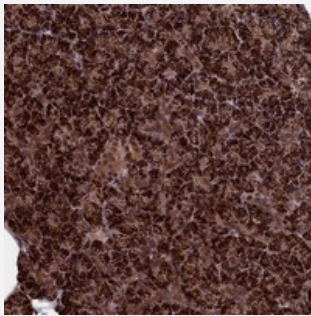
Catalog # PAB23952 Size 100 uL

Applications



Western Blot

Western blot analysis of Lane 1: RT-4, Lane 2: U-251 MG, Lane 3: Human Plasma, Lane 4: Liver, Lane 5: Tonsil with C19orf29 polyclonal antibody (Cat # PAB23952) at 1:250-1:500 dilution.



Immunohistochemistry (Formalin/PFA-fixed paraffin-embedded sections)

Immunohistochemical staining of human pancreas with C19orf29 polyclonal antibody (Cat # PAB23952) shows strong cytoplasmic and nuclear positivity in exocrine glandular cells at 1:500-1:1000 dilution.

Specification

Product Description	Rabbit polyclonal antibody raised against recombinant C19orf29.
Immunogen	Recombinant protein corresponding to amino acids of human C19orf29.
Sequence	SLDDYDAGRYSPRLTAHELPLDAHVLEPDEDLQRLQLSRQQLQVTGDASESAEDIFFRRAKEG MGQDEAQFSVEMPLTG
Host	Rabbit
Reactivity	Human
Form	Liquid

Purification	Antigen affinity purification
Isotype	IgG
Recommend Usage	Immunohistochemistry (1:500-1:1000) Western Blot (1:250-1:500) The optimal working dilution should be determined by the end user.
Storage Buffer	In PBS, pH 7.2 (40% glycerol, 0.02% sodium azide)
Storage Instruction	Store at 4°C. For long term storage store at -20°C. Aliquot to avoid repeated freezing and thawing.
Note	This product contains sodium azide: a POISONOUS AND HAZARDOUS SUBSTANCE which should be handled by trained staff only.

Applications

- Western Blot

Western blot analysis of Lane 1: RT-4, Lane 2: U-251 MG, Lane 3: Human Plasma, Lane 4: Liver, Lane 5: Tonsil with C19orf29 polyclonal antibody (Cat # PAB23952) at 1:250-1:500 dilution.

- Immunohistochemistry (Formalin/PFA-fixed paraffin-embedded sections)

Immunohistochemical staining of human pancreas with C19orf29 polyclonal antibody (Cat # PAB23952) shows strong cytoplasmic and nuclear positivity in exocrine glandular cells at 1:500-1:1000 dilution.

Gene Info — C19orf29

Entrez GeneID	58509
Protein Accession#	Q8WUQ7
Gene Name	C19orf29
Gene Alias	NY-REN-24, cactin, fSAPc
Gene Description	chromosome 19 open reading frame 29
Gene Ontology	Hyperlink
Other Designations	NY REN 24 antigen NY-REN-24 antigen cactin homolog functional spliceosome-associated protein c

Publication Reference

- [Human Cactin interacts with DHX8 and SRRM2 to assure efficient pre-mRNA splicing and sister chromatid cohesion.](#)

Zanini IM, Sonesson C, Lorenzi LE, Azzalin CM.

Journal of Cell Science 2017 Feb; 130(4):767.

Application: IF, WB, Human , HeLa, U2OS cells

Disease

- [Cardiovascular Diseases](#)
- [Diabetes Mellitus](#)
- [Edema](#)