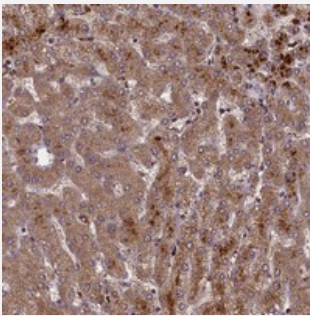


# CLRN2 polyclonal antibody

Catalog # PAB23939      Size 100 uL

## Applications



### Immunohistochemistry (Formalin/PFA-fixed paraffin-embedded sections)

Immunohistochemical staining of human liver with CLRN2 polyclonal antibody (Cat # PAB23939) shows moderate cytoplasmic positivity in hepatocytes at 1:200-1:500 dilution.

## Specification

<b>Product Description</b>	Rabbit polyclonal antibody raised against recombinant CLRN2.
<b>Immunogen</b>	Recombinant protein corresponding to amino acids of human CLRN2.
<b>Sequence</b>	VKFHDLTERIANFQEKLQFVVVEEQYEEES
<b>Host</b>	Rabbit
<b>Reactivity</b>	Human
<b>Form</b>	Liquid
<b>Purification</b>	Antigen affinity purification
<b>Isotype</b>	IgG
<b>Recommend Usage</b>	Immunohistochemistry (1:200-1:500) The optimal working dilution should be determined by the end user.
<b>Storage Buffer</b>	In PBS, pH 7.2 (40% glycerol, 0.02% sodium azide)
<b>Storage Instruction</b>	Store at 4°C. For long term storage store at -20°C. Aliquot to avoid repeated freezing and thawing.

**Note**

This product contains sodium azide: a POISONOUS AND HAZARDOUS SUBSTANCE which should be handled by trained staff only.

## Applications

- Immunohistochemistry (Formalin/PFA-fixed paraffin-embedded sections)

Immunohistochemical staining of human liver with CLRN2 polyclonal antibody (Cat # PAB23939) shows moderate cytoplasmic positivity in hepatocytes at 1:200-1:500 dilution.

## Gene Info — CLRN2

Entrez GeneID	<a href="#">645104</a>
---------------	------------------------

Protein Accession#	<a href="#">A0PK11</a>
--------------------	------------------------

Gene Name	CLRN2
-----------	-------

Gene Alias	-
------------	---

Gene Description	clarin 2
------------------	----------

Gene Ontology	<a href="#">Hyperlink</a>
---------------	---------------------------

Gene Summary	This gene belongs to the clarin family of genes. The clarins appear to belong to a large superfamily of small integral membrane glycoproteins with four transmembrane domains. The exact function of this gene is unknown. [provided by RefSeq]
--------------	---

Other Designations	Usher syndrome 3A-like
--------------------	------------------------