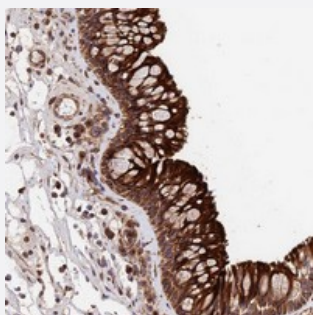


# TMEM111 polyclonal antibody

Catalog # PAB23932      Size 100 uL

## Applications



### Immunohistochemistry (Formalin/PFA-fixed paraffin-embedded sections)

Immunohistochemical staining of human nasopharynx with TMEM111 polyclonal antibody (Cat # PAB23932) shows strong cytoplasmic and membranous positivity in respiratory epithelial cells at 1:50-1:200 dilution.

## Specification

<b>Product Description</b>	Rabbit polyclonal antibody raised against recombinant TMEM111.
<b>Immunogen</b>	Recombinant protein corresponding to amino acids of human TMEM111.
<b>Sequence</b>	QVSDSQVLIRSRVLRENGKYIPKQSFLTRKYFNNPEDGFFKKTGRKVVPPSPMTDPTM
<b>Host</b>	Rabbit
<b>Reactivity</b>	Human
<b>Form</b>	Liquid
<b>Purification</b>	Antigen affinity purification
<b>Isotype</b>	IgG
<b>Recommend Usage</b>	Immunohistochemistry (1:50-1:200) The optimal working dilution should be determined by the end user.
<b>Storage Buffer</b>	In PBS, pH 7.2 (40% glycerol, 0.02% sodium azide)
<b>Storage Instruction</b>	Store at 4°C. For long term storage store at -20°C. Aliquot to avoid repeated freezing and thawing.

**Note**

This product contains sodium azide: a POISONOUS AND HAZARDOUS SUBSTANCE which should be handled by trained staff only.

## Applications

- Immunohistochemistry (Formalin/PFA-fixed paraffin-embedded sections)

Immunohistochemical staining of human nasopharynx with TMEM111 polyclonal antibody (Cat # PAB23932) shows strong cytoplasmic and membranous positivity in respiratory epithelial cells at 1:50-1:200 dilution.

## Gene Info — TMEM111

Entrez GeneID	<a href="#">55831</a>
---------------	-----------------------

Protein Accession#	<a href="#">Q9P0I2</a>
--------------------	------------------------

Gene Name	TMEM111
-----------	---------

Gene Alias	POB
------------	-----

Gene Description	transmembrane protein 111
------------------	---------------------------

Gene Ontology	<a href="#">Hyperlink</a>
---------------	---------------------------

Other Designations	30 kDa protein partial optokinetic response b
--------------------	---