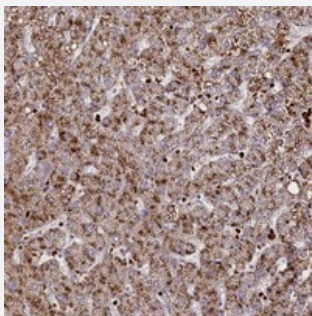


SUSD3 polyclonal antibody

Catalog # PAB23923 Size 100 uL

Applications



Immunohistochemistry (Formalin/PFA-fixed paraffin-embedded sections)

Immunohistochemical staining of human liver with SUSD3 polyclonal antibody (Cat # PAB23923) shows moderate granular cytoplasmic positivity in hepatocytes at 1:50-1:200 dilution.

Specification

Product Description	Rabbit polyclonal antibody raised against recombinant SUSD3.
Immunogen	Recombinant protein corresponding to amino acids of human SUSD3.
Sequence	TFQVLRGNGASVGTVLMFRCPSNHQMVGSGLLTCTWKGSIAEWSSGSPVCKLVPPHETFGFKV A
Host	Rabbit
Reactivity	Human
Form	Liquid
Purification	Antigen affinity purification
Isotype	IgG
Recommend Usage	Immunohistochemistry (1:50-1:200) Western Blot (1:250-1:500) The optimal working dilution should be determined by the end user.
Storage Buffer	In PBS, pH 7.2 (40% glycerol, 0.02% sodium azide)

Storage Instruction

Store at 4°C. For long term storage store at -20°C.
Aliquot to avoid repeated freezing and thawing.

Note

This product contains sodium azide: a POISONOUS AND HAZARDOUS SUBSTANCE which should be handled by trained staff only.

Applications

- Immunohistochemistry (Formalin/PFA-fixed paraffin-embedded sections)

Immunohistochemical staining of human liver with SUS D3 polyclonal antibody (Cat # PAB23923) shows moderate granular cytoplasmic positivity in hepatocytes at 1:50-1:200 dilution.

Gene Info — SUS D3

Entrez GeneID[203328](#)**Protein Accession#**[Q96L08](#)**Gene Name**

SUS D3

Gene Alias

MGC26847

Gene Description

sushi domain containing 3

Gene Ontology[Hyperlink](#)**Other Designations**

OTTHUMP00000021669