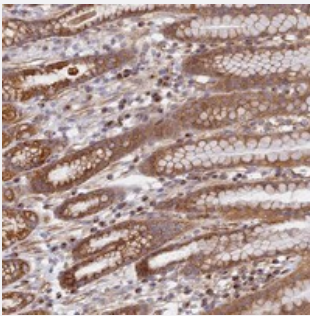


DDA1 polyclonal antibody

Catalog # PAB23906 Size 100 uL

Applications



Immunohistochemistry (Formalin/PFA-fixed paraffin-embedded sections)

Immunohistochemical staining of human stomach with DDA1 polyclonal antibody (Cat # PAB23906) shows moderate cytoplasmic positivity in glandular cells at 1:50-1:200 dilution.

Specification

Product Description	Rabbit polyclonal antibody raised against recombinant DDA1.
Immunogen	Recombinant protein corresponding to amino acids of human DDA1.
Sequence	LKGLPVYNKSNFSRFHADSVCKASNRRPSVYLP TREY PSEQIIVTEKTNILLRYLHQQWDKKNAAK KRDQEQVELE
Host	Rabbit
Reactivity	Human
Form	Liquid
Purification	Antigen affinity purification
Isotype	IgG
Recommend Usage	Immunohistochemistry (1:50-1:200) The optimal working dilution should be determined by the end user.
Storage Buffer	In PBS, pH 7.2 (40% glycerol, 0.02% sodium azide)

Storage Instruction

Store at 4°C. For long term storage store at -20°C.
Aliquot to avoid repeated freezing and thawing.

Note

This product contains sodium azide: a POISONOUS AND HAZARDOUS SUBSTANCE which should be handled by trained staff only.

Applications

- Immunohistochemistry (Formalin/PFA-fixed paraffin-embedded sections)

Immunohistochemical staining of human stomach with DDA1 polyclonal antibody (Cat # PAB23906) shows moderate cytoplasmic positivity in glandular cells at 1:50-1:200 dilution.

Gene Info — DDA1

Entrez GeneID[79016](#)**Protein Accession#**[Q9BW61](#)**Gene Name**

DDA1

Gene Alias

C19orf58, MGC2594, PCIA1

Gene Description

DET1 and DDB1 associated 1

Gene Ontology[Hyperlink](#)**Other Designations**

cross-immune reaction antigen PCIA1