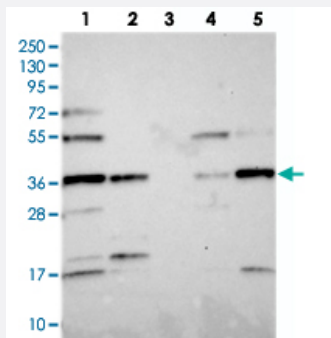


FAM118B polyclonal antibody

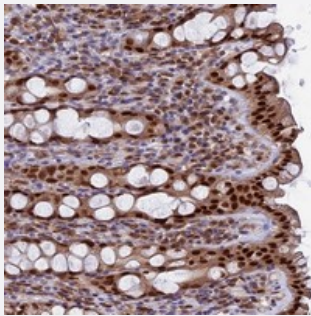
Catalog # PAB23902 Size 100 uL

Applications



Western Blot

Western blot analysis of Lane 1: RT-4, Lane 2: U-251 MG, Lane 3: Human Plasma, Lane 4: Liver, Lane 5: Tonsil with FAM118B polyclonal antibody (Cat # PAB23902) at 1:250-1:500 dilution.



Immunohistochemistry (Formalin/PFA-fixed paraffin-embedded sections)

Immunohistochemical staining of human rectum with FAM118B polyclonal antibody (Cat # PAB23902) shows strong nuclear positivity in glandular cells at 1:500-1:1000 dilution.

Specification

Product Description	Rabbit polyclonal antibody raised against recombinant FAM118B.
Immunogen	Recombinant protein corresponding to amino acids of human FAM118B.
Sequence	KHKSDLEHFMLVRRGDVDEFKKLRNMLDKGIKVISYGDDYADLPEYFKRLTCEISTRGTSAGMV REGQLNGSSAAHSE
Host	Rabbit
Reactivity	Human
Form	Liquid

Purification	Antigen affinity purification
Isotype	IgG
Recommend Usage	Immunohistochemistry (1:500-1:1000) Western Blot (1:250-1:500) The optimal working dilution should be determined by the end user.
Storage Buffer	In PBS, pH 7.2 (40% glycerol, 0.02% sodium azide)
Storage Instruction	Store at 4°C. For long term storage store at -20°C. Aliquot to avoid repeated freezing and thawing.
Note	This product contains sodium azide: a POISONOUS AND HAZARDOUS SUBSTANCE which should be handled by trained staff only.

Applications

- Western Blot

Western blot analysis of Lane 1: RT-4, Lane 2: U-251 MG, Lane 3: Human Plasma, Lane 4: Liver, Lane 5: Tonsil with FAM118B polyclonal antibody (Cat # PAB23902) at 1:250-1:500 dilution.

- Immunohistochemistry (Formalin/PFA-fixed paraffin-embedded sections)

Immunohistochemical staining of human rectum with FAM118B polyclonal antibody (Cat # PAB23902) shows strong nuclear positivity in glandular cells at 1:500-1:1000 dilution.

Gene Info — FAM118B

Entrez GeneID	79607
Protein Accession#	Q9BPY3
Gene Name	FAM118B
Gene Alias	FLJ21103
Gene Description	family with sequence similarity 118, member B
Gene Ontology	Hyperlink
Gene Summary	O
Other Designations	hypothetical protein LOC79607