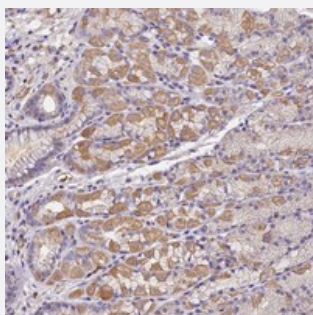


LENG8 polyclonal antibody

Catalog # PAB23893 Size 100 uL

Applications



Immunohistochemistry (Formalin/PFA-fixed paraffin-embedded sections)

Immunohistochemical staining of human stomach with LENG8 polyclonal antibody (Cat # PAB23893) shows moderate cytoplasmic positivity in glandular cells at 1:200-1:500 dilution.

Specification

Product Description	Rabbit polyclonal antibody raised against recombinant LENG8.
Immunogen	Recombinant protein corresponding to amino acids of human LENG8.
Sequence	PERELKKQKRAARFQHGHSRRLRLEPLVLQMSSLESSGADPDWQELQVGTCPDITKHYLRLTCA PDPSTVRPVAVLKKSCLCMVKCHWKEKQDYAFACEQMKSIHQDLTVQ
Host	Rabbit
Reactivity	Human
Form	Liquid
Purification	Antigen affinity purification
Isotype	IgG
Recommend Usage	Immunohistochemistry (1:200-1:500) The optimal working dilution should be determined by the end user.
Storage Buffer	In PBS, pH 7.2 (40% glycerol, 0.02% sodium azide)

Storage Instruction

Store at 4°C. For long term storage store at -20°C.
Aliquot to avoid repeated freezing and thawing.

Note

This product contains sodium azide: a POISONOUS AND HAZARDOUS SUBSTANCE which should be handled by trained staff only.

Applications

- Immunohistochemistry (Formalin/PFA-fixed paraffin-embedded sections)

Immunohistochemical staining of human stomach with LENG8 polyclonal antibody (Cat # PAB23893) shows moderate cytoplasmic positivity in glandular cells at 1:200-1:500 dilution.

Gene Info — LENG8

Entrez GeneID[114823](#)**Protein Accession#**[Q96PV6](#)**Gene Name**

LENG8

Gene Alias

KIAA1932, MGC40108, pp13842

Gene Description

leukocyte receptor cluster (LRC) member 8

Gene Ontology[Hyperlink](#)**Other Designations**

leukocyte receptor cluster member 8