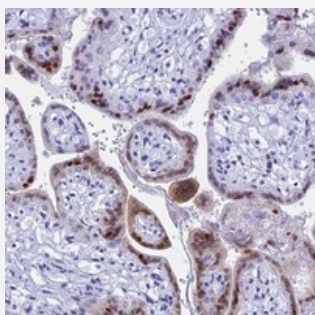


KCTD21 polyclonal antibody

Catalog # PAB23882 Size 100 uL

Applications



Immunohistochemistry (Formalin/PFA-fixed paraffin-embedded sections)

Immunohistochemical staining of human placenta with KCTD21 polyclonal antibody (Cat # PAB23882) shows strong nuclear positivity in subset of trophoblastic cells.

Specification

Product Description	Rabbit polyclonal antibody raised against recombinant KCTD21.
Immunogen	Recombinant protein corresponding to amino acids of human KCTD21.
Sequence	EKNAMLNITLNQRVQTVHFTVREAPQIYSLSSSSMEVFNANIFSTSCFLKLLGSKLFYCSNGNLSSI TSHLQDPN
Host	Rabbit
Reactivity	Human
Form	Liquid
Purification	Antigen affinity purification
Isotype	IgG
Recommend Usage	Immunohistochemistry (1:50-1:200) The optimal working dilution should be determined by the end user.
Storage Buffer	In PBS, pH 7.2 (40% glycerol, 0.02% sodium azide)

Storage Instruction

Store at 4°C. For long term storage store at -20°C.
Aliquot to avoid repeated freezing and thawing.

Note

This product contains sodium azide: a POISONOUS AND HAZARDOUS SUBSTANCE which should be handled by trained staff only.

Applications

- Immunohistochemistry (Formalin/PFA-fixed paraffin-embedded sections)

Immunohistochemical staining of human placenta with KCTD21 polyclonal antibody (Cat # PAB23882) shows strong nuclear positivity in subset of trophoblastic cells.

Gene Info — KCTD21

Entrez GeneID[283219](#)**Protein Accession#**[Q4G0X4](#)**Gene Name**

KCTD21

Gene Alias

-

Gene Description

potassium channel tetramerisation domain containing 21

Gene Ontology[Hyperlink](#)**Other Designations**

-