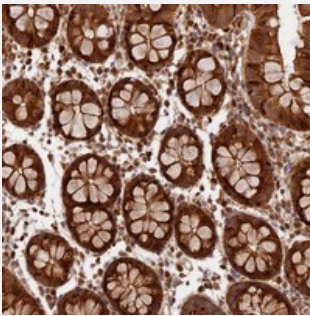


# C15orf27 polyclonal antibody

Catalog # PAB23877      Size 100 uL

## Applications



### Immunohistochemistry (Formalin/PFA-fixed paraffin-embedded sections)

Immunohistochemical staining of human colon with C15orf27 polyclonal antibody (Cat # PAB23877) shows strong cytoplasmic positivity in glandular cells at 1:500-1:1000 dilution.

## Specification

Product Description	Rabbit polyclonal antibody raised against recombinant C15orf27.
Immunogen	Recombinant protein corresponding to amino acids of human C15orf27.
Sequence	SLSIEDPCPSQKALDPAPLARPSAGSAQTSPLEHRVSLFNQKNQEGFTVFQIRPVIHFQPTVPM LEDKFRSLESKEQKLHRV
Host	Rabbit
Reactivity	Human
Form	Liquid
Purification	Antigen affinity purification
Isotype	IgG
Recommend Usage	Immunohistochemistry (1:500-1:1000) The optimal working dilution should be determined by the end user.
Storage Buffer	In PBS, pH 7.2 (40% glycerol, 0.02% sodium azide)

**Storage Instruction**

Store at 4°C. For long term storage store at -20°C.  
Aliquot to avoid repeated freezing and thawing.

**Note**

This product contains sodium azide: a POISONOUS AND HAZARDOUS SUBSTANCE which should be handled by trained staff only.

## Applications

- Immunohistochemistry (Formalin/PFA-fixed paraffin-embedded sections)

Immunohistochemical staining of human colon with C15orf27 polyclonal antibody (Cat # PAB23877) shows strong cytoplasmic positivity in glandular cells at 1:500-1:1000 dilution.

## Gene Info — C15orf27

**Entrez GeneID** [123591](#)

**Protein Accession#** [Q2M3C6](#)

**Gene Name** C15orf27

**Gene Alias** FLJ30304, FLJ38190

**Gene Description** chromosome 15 open reading frame 27

**Gene Ontology** [Hyperlink](#)

**Other Designations** hypothetical protein LOC123591