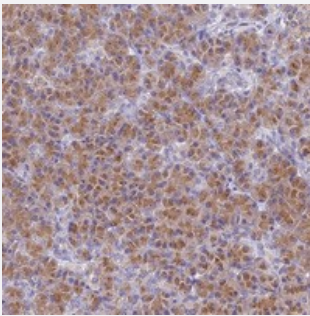


FAM212A polyclonal antibody

Catalog # PAB23867 Size 100 uL

Applications



Immunohistochemistry (Formalin/PFA-fixed paraffin-embedded sections)

Immunohistochemical staining of human pancreas with FAM212A polyclonal antibody (Cat # PAB23867) shows moderate cytoplasmic positivity in exocrine glandular cells.

Specification

Product Description	Rabbit polyclonal antibody raised against recombinant FAM212A.
Immunogen	Recombinant protein corresponding to amino acids of human FAM212A.
Sequence	WDSGFSEVSGSTWREEELPVSQRPAPSAQPLRRQCLSVSGLPMPSRAPVASVPPVHHPRPKS TPDACLEHWQGLEAEDWTAALLNRGRS
Host	Rabbit
Reactivity	Human
Form	Liquid
Purification	Antigen affinity purification
Isotype	IgG
Recommend Usage	Immunohistochemistry (1:500-1:1000) The optimal working dilution should be determined by the end user.
Storage Buffer	In PBS, pH 7.2 (40% glycerol, 0.02% sodium azide)

Storage Instruction

Store at 4°C. For long term storage store at -20°C.
Aliquot to avoid repeated freezing and thawing.

Note

This product contains sodium azide: a POISONOUS AND HAZARDOUS SUBSTANCE which should be handled by trained staff only.

Applications

- Immunohistochemistry (Formalin/PFA-fixed paraffin-embedded sections)

Immunohistochemical staining of human pancreas with FAM212A polyclonal antibody (Cat # PAB23867) shows moderate cytoplasmic positivity in exocrine glandular cells.

Gene Info — FAM212A

Entrez GeneID[389119](#)**Protein Accession#**[Q96EL1](#)**Gene Name**

FAM212A

Gene Alias

C3orf54, INKA1

Gene Description

family with sequence similarity 212, member A

Gene Ontology[Hyperlink](#)**Gene Summary**

protein FAM212A

Other Designations

protein FAM212A