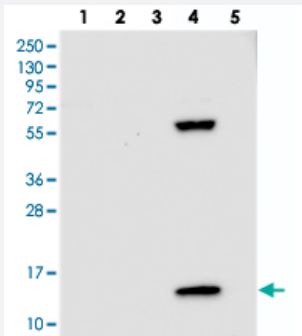


PPP4R4 polyclonal antibody

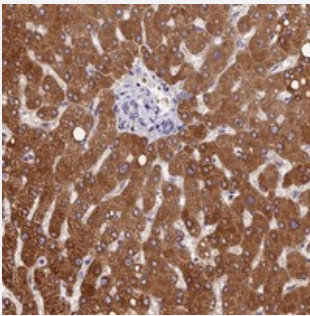
Catalog # PAB23865 Size 100 uL

Applications



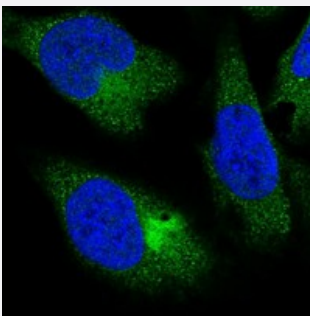
Western Blot

Western blot analysis of Lane 1: RT-4, Lane 2: U-251 MG, Lane 3: Human Plasma, Lane 4: Liver, Lane 5: Tonsil with PPP4R4 polyclonal antibody (Cat # PAB23865) at 1:250-1:500 dilution.



Immunohistochemistry (Formalin/PFA-fixed paraffin-embedded sections)

Immunohistochemical staining of human liver with PPP4R4 polyclonal antibody (Cat # PAB23865) shows strong cytoplasmic positivity in hepatocytes at 1:200-1:500 dilution.



Immunofluorescence

Immunofluorescent staining of human cell line U-2 OS with PPP4R4 polyclonal antibody (Cat # PAB23865) at 1-4 ug/mL dilution shows positivity in cytoplasm.

Specification

Product Description

Rabbit polyclonal antibody raised against recombinant PPP4R4.

Immunogen

Recombinant protein corresponding to amino acids of human PPP4R4.

Sequence	SLFGYMEDLQELTIERPVRRLSKTPEEIERLTVDEDLSDIERAVYLLSAGQDVQGTSVIANLPFLMR QNPTETLRRVLPKVR
Host	Rabbit
Reactivity	Human
Form	Liquid
Purification	Antigen affinity purification
Isotype	IgG
Recommend Usage	Immunohistochemistry (1:200-1:500) Western Blot (1:250-1:500) Immunofluorescence (1-4 ug/mL) The optimal working dilution should be determined by the end user.
Storage Buffer	In PBS, pH 7.2 (40% glycerol, 0.02% sodium azide)
Storage Instruction	Store at 4°C. For long term storage store at -20°C. Aliquot to avoid repeated freezing and thawing.
Note	This product contains sodium azide: a POISONOUS AND HAZARDOUS SUBSTANCE which should be handled by trained staff only.

Applications

- Western Blot

Western blot analysis of Lane 1: RT-4, Lane 2: U-251 MG, Lane 3: Human Plasma, Lane 4: Liver, Lane 5: Tonsil with PPP4R4 polyclonal antibody (Cat # PAB23865) at 1:250-1:500 dilution.

- Immunohistochemistry (Formalin/PFA-fixed paraffin-embedded sections)

Immunohistochemical staining of human liver with PPP4R4 polyclonal antibody (Cat # PAB23865) shows strong cytoplasmic positivity in hepatocytes at 1:200-1:500 dilution.

- Immunofluorescence

Immunofluorescent staining of human cell line U-2 OS with PPP4R4 polyclonal antibody (Cat # PAB23865) at 1-4 ug/mL dilution shows positivity in cytoplasm.

Gene Info — PPP4R4

Entrez GeneID [57718](#)

Protein Accession# [Q6NUP7](#)

Gene Name	PPP4R4
Gene Alias	KIAA1622, PP4R4
Gene Description	protein phosphatase 4, regulatory subunit 4
Gene Ontology	Hyperlink
Gene Summary	<p>The protein encoded by this gene is a HEAT-like repeat-containing protein. The HEAT repeat is a tandemly repeated, 37-47 amino acid long module occurring in a number of cytoplasmic proteins. Arrays of HEAT repeats form a rod-like helical structure and appear to function as protein-protein interaction surfaces. The repeat-containing region of this protein has some similarity to the constant regulatory domain of the protein phosphatase 2A PR65/A subunit. The function of this particular gene product has not been determined. Alternative splicing has been observed for this gene and two transcript variants encoding distinct isoforms have been identified. [provided by RefSeq]</p>
Other Designations	HEAT-like repeat-containing protein