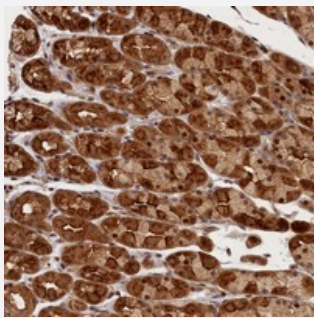


CEP44 polyclonal antibody

Catalog # PAB23859 Size 100 uL

Applications



Immunohistochemistry (Formalin/PFA-fixed paraffin-embedded sections)

Immunohistochemical staining of human stomach with CEP44 polyclonal antibody (Cat # PAB23859) shows strong cytoplasmic and nuclear positivity in glandular cells at 1:200-1:500 dilution.

Specification

Product Description	Rabbit polyclonal antibody raised against recombinant CEP44.
Immunogen	Recombinant protein corresponding to amino acids of human CEP44.
Sequence	VKVPEIKAEQQDVNVNPEITALQTMLAECQENLKKLTSIEKRLDCLEQKMKGKVMVDENTWTNLLSRVTLLLETEMLLSK
Host	Rabbit
Reactivity	Human
Form	Liquid
Purification	Antigen affinity purification
Isotype	IgG
Recommend Usage	Immunohistochemistry (1:200-1:500) The optimal working dilution should be determined by the end user.
Storage Buffer	In PBS, pH 7.2 (40% glycerol, 0.02% sodium azide)

Storage Instruction

Store at 4°C. For long term storage store at -20°C.
Aliquot to avoid repeated freezing and thawing.

Note

This product contains sodium azide: a POISONOUS AND HAZARDOUS SUBSTANCE which should be handled by trained staff only.

Applications

- Immunohistochemistry (Formalin/PFA-fixed paraffin-embedded sections)

Immunohistochemical staining of human stomach with CEP44 polyclonal antibody (Cat # PAB23859) shows strong cytoplasmic and nuclear positivity in glandular cells at 1:200-1:500 dilution.

Gene Info — CEP44

Entrez GeneID[80817](#)**Protein Accession#**[Q9C0F1](#)**Gene Name**

CEP44

Gene Alias

KIAA1712, PS1TP3

Gene Description

centrosomal protein 44kDa

Gene Ontology[Hyperlink](#)**Other Designations**

HBV PreS1-transactivated protein 3; centrosomal protein of 44 kDa