

SLC38A7 polyclonal antibody

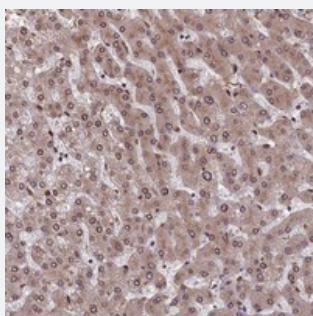
Catalog # PAB23852 Size 100 uL

Applications



Western Blot

Western blot analysis of Lane 1: RT-4, Lane 2: U-251 MG, Lane 3: Human Plasma, Lane 4: Liver, Lane 5: Tonsil with SLC38A7 polyclonal antibody (Cat # PAB23852) at 1:250-1:500 dilution.



Immunohistochemistry (Formalin/PFA-fixed paraffin-embedded sections)

Immunohistochemical staining of human liver with SLC38A7 polyclonal antibody (Cat # PAB23852) shows moderate cytoplasmic and nuclear membranous positivity in hepatocytes at 1:200-1:500 dilution.

Specification

Product Description	Rabbit polyclonal antibody raised against recombinant SLC38A7.
Immunogen	Recombinant protein corresponding to amino acids of human SLC38A7.
Sequence	MAQVSINNDYSEWDLSTDAGERARLLQSPCVDTPKSEWEASPGGLDRGTTST
Host	Rabbit
Reactivity	Human
Form	Liquid
Purification	Antigen affinity purification

Isotype	IgG
Recommend Usage	Immunohistochemistry (1:200-1:500) Western Blot (1:250-1:500) The optimal working dilution should be determined by the end user.
Storage Buffer	In PBS, pH 7.2 (40% glycerol, 0.02% sodium azide)
Storage Instruction	Store at 4°C. For long term storage store at -20°C. Aliquot to avoid repeated freezing and thawing.
Note	This product contains sodium azide: a POISONOUS AND HAZARDOUS SUBSTANCE which should be handled by trained staff only.

Applications

- Western Blot

Western blot analysis of Lane 1: RT-4, Lane 2: U-251 MG, Lane 3: Human Plasma, Lane 4: Liver, Lane 5: Tonsil with SLC38A7 polyclonal antibody (Cat # PAB23852) at 1:250-1:500 dilution.

- Immunohistochemistry (Formalin/PFA-fixed paraffin-embedded sections)

Immunohistochemical staining of human liver with SLC38A7 polyclonal antibody (Cat # PAB23852) shows moderate cytoplasmic and nuclear membranous positivity in hepatocytes at 1:200-1:500 dilution.

Gene Info — SLC38A7

Entrez GeneID	55238
Protein Accession#	Q9NVC3
Gene Name	SLC38A7
Gene Alias	FLJ10815, FLJ12724
Gene Description	solute carrier family 38, member 7
Gene Ontology	Hyperlink
Gene Summary	O
Other Designations	amino acid transporter