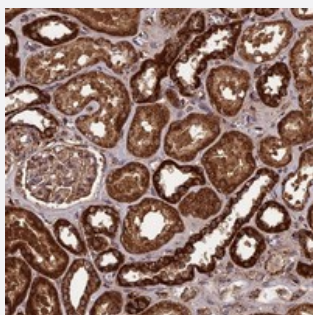


CCDC15 polyclonal antibody

Catalog # PAB23848 Size 100 uL

Applications



Immunohistochemistry (Formalin/PFA-fixed paraffin-embedded sections)

Immunohistochemical staining of human kidney with CCDC15 polyclonal antibody (Cat # PAB23848) shows strong cytoplasmic positivity in cells in tubules.

Specification

Product Description	Rabbit polyclonal antibody raised against recombinant CCDC15.
Immunogen	Recombinant protein corresponding to amino acids of human CCDC15.
Sequence	QQPASFMREERVREELPLDYHQYVVPKIQDQDSPREQNKHILPSSFEKWEIARGNTPGVPLAYD RYQSGSLSTEFQAPLAFQSDVDKEEDKKERQKQYLR
Host	Rabbit
Reactivity	Human
Form	Liquid
Purification	Antigen affinity purification
Isotype	IgG
Recommend Usage	Immunohistochemistry (1:500-1:1000) The optimal working dilution should be determined by the end user.
Storage Buffer	In PBS, pH 7.2 (40% glycerol, 0.02% sodium azide)

Storage Instruction

Store at 4°C. For long term storage store at -20°C.
Aliquot to avoid repeated freezing and thawing.

Note

This product contains sodium azide: a POISONOUS AND HAZARDOUS SUBSTANCE which should be handled by trained staff only.

Applications

- Immunohistochemistry (Formalin/PFA-fixed paraffin-embedded sections)

Immunohistochemical staining of human kidney with CCDC15 polyclonal antibody (Cat # PAB23848) shows strong cytoplasmic positivity in cells in tubules.

Gene Info — CCDC15

Entrez GeneID[80071](#)**Protein Accession#**[Q0P6D6](#)**Gene Name**

CCDC15

Gene Alias

FLJ13215

Gene Description

coiled-coil domain containing 15

Gene Ontology[Hyperlink](#)**Other Designations**

-

Disease

- [Tobacco Use Disorder](#)