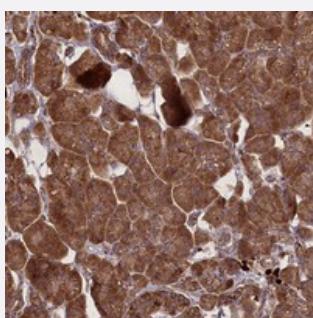


# FAM96B polyclonal antibody

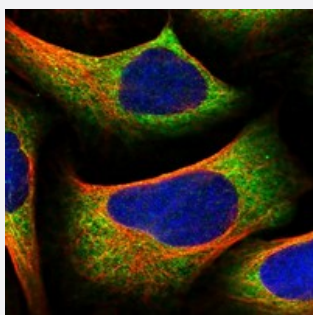
Catalog # PAB23847      Size 100 uL

## Applications



### Immunohistochemistry (Formalin/PFA-fixed paraffin-embedded sections)

Immunohistochemical staining of human pancreas with FAM96B polyclonal antibody (Cat # PAB23847) shows strong cytoplasmic positivity in exocrine glandular cells.



### Immunofluorescence

Immunofluorescent staining of human cell line U-2 OS with FAM96B polyclonal antibody (Cat # PAB23847) at 1-4 ug/mL dilution shows positivity in cytoplasm.

## Specification

Product Description	Rabbit polyclonal antibody raised against recombinant FAM96B.
Immunogen	Recombinant protein corresponding to amino acids of human FAM96B.
Sequence	SMATLIGLSIKVKLLRSLPQRFKMDVHITPGTHASEHAVNKQLADKVERA
Host	Rabbit
Reactivity	Human
Form	Liquid
Purification	Antigen affinity purification

Isotype	IgG
Recommend Usage	Immunohistochemistry (1:10-1:20) Immunofluorescence (1-4 ug/mL) The optimal working dilution should be determined by the end user.
Storage Buffer	In PBS, pH 7.2 (40% glycerol, 0.02% sodium azide)
Storage Instruction	Store at 4°C. For long term storage store at -20°C. Aliquot to avoid repeated freezing and thawing.
Note	This product contains sodium azide: a POISONOUS AND HAZARDOUS SUBSTANCE which should be handled by trained staff only.

## Applications

- Immunohistochemistry (Formalin/PFA-fixed paraffin-embedded sections)

Immunohistochemical staining of human pancreas with FAM96B polyclonal antibody (Cat # PAB23847) shows strong cytoplasmic positivity in exocrine glandular cells.

- Immunofluorescence

Immunofluorescent staining of human cell line U-2 OS with FAM96B polyclonal antibody (Cat # PAB23847) at 1-4 ug/mL dilution shows positivity in cytoplasm.

## Gene Info — FAM96B

Entrez GeneID	<a href="#">51647</a>
Protein Accession#	<a href="#">Q9Y3D0</a>
Gene Name	FAM96B
Gene Alias	CGI-128
Gene Description	family with sequence similarity 96, member B
Gene Ontology	<a href="#">Hyperlink</a>
Gene Summary	O
Other Designations	hypothetical protein LOC51647