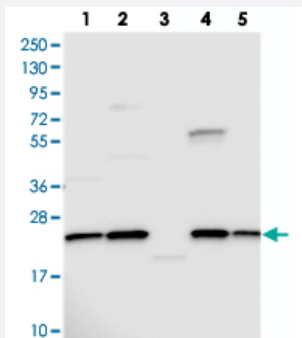


NPVF polyclonal antibody

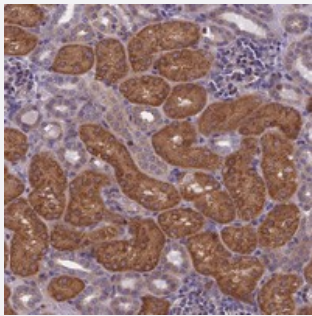
Catalog # PAB23846 Size 100 uL

Applications



Western Blot

Western blot analysis of Lane 1: RT-4, Lane 2: U-251 MG, Lane 3: Human Plasma, Lane 4: Liver, Lane 5: Tonsil with NPVF polyclonal antibody (Cat # PAB23846).



Immunohistochemistry (Formalin/PFA-fixed paraffin-embedded sections)

Immunohistochemical staining of human kidney with NPVF polyclonal antibody (Cat # PAB23846) shows strong cytoplasmic positivity in renal tubules.

Specification

Product Description	Rabbit polyclonal antibody raised against recombinant NPVF.
Immunogen	Recombinant protein corresponding to amino acids of human NPVF.
Sequence	TANLPLRSGRNMEVSLVRRVPNLPQRFGRITTTAKSVCRM LSDL CQGSMHSPCANDLFYSMTCC HQEIQNPDQ
Host	Rabbit
Reactivity	Human
Form	Liquid

Purification	Antigen affinity purification
Isotype	IgG
Recommend Usage	Immunohistochemistry (1:200-1:500) Western Blot (1:250-1:500) The optimal working dilution should be determined by the end user.
Storage Buffer	In PBS, pH 7.2 (40% glycerol, 0.02% sodium azide)
Storage Instruction	Store at 4°C. For long term storage store at -20°C. Aliquot to avoid repeated freezing and thawing.
Note	This product contains sodium azide: a POISONOUS AND HAZARDOUS SUBSTANCE which should be handled by trained staff only.

Applications

- Western Blot

Western blot analysis of Lane 1: RT-4, Lane 2: U-251 MG, Lane 3: Human Plasma, Lane 4: Liver, Lane 5: Tonsil with NPVF polyclonal antibody (Cat # PAB23846).

- Immunohistochemistry (Formalin/PFA-fixed paraffin-embedded sections)

Immunohistochemical staining of human kidney with NPVF polyclonal antibody (Cat # PAB23846) shows strong cytoplasmic positivity in renal tubules.

Gene Info — NPVF

Entrez GeneID	64111
Protein Accession#	Q9HCQ7
Gene Name	NPVF
Gene Alias	C7orf9, RFRP
Gene Description	neuropeptide VF precursor
Gene Ontology	Hyperlink
Other Designations	FMRFamide-related peptides OTTHUMP00000158625 RFamide-related peptide neuropeptide NPVF