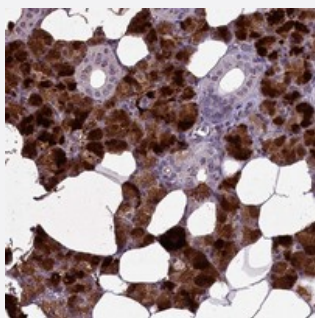


# C15orf57 polyclonal antibody

Catalog # PAB23840      Size 100 uL

## Applications



### Immunohistochemistry (Formalin/PFA-fixed paraffin-embedded sections)

Immunohistochemical staining of human salivary gland with C15orf57 polyclonal antibody (Cat # PAB23840) shows strong cytoplasmic positivity in glandular cells.

## Specification

Product Description	Rabbit polyclonal antibody raised against recombinant C15orf57.
Immunogen	Recombinant protein corresponding to amino acids of human C15orf57.
Sequence	GSGLRFQMFMFESADSTATRSGQDLWAEICSLPNPEQEDGANNAFSDSFVDSCPEGEGQRE VADFAVQPAVKPWAPLQDSEVYLASLEKKL
Host	Rabbit
Reactivity	Human
Form	Liquid
Purification	Antigen affinity purification
Isotype	IgG
Recommend Usage	Immunohistochemistry (1:200-1:500) The optimal working dilution should be determined by the end user.
Storage Buffer	In PBS, pH 7.2 (40% glycerol, 0.02% sodium azide)

**Storage Instruction**

Store at 4°C. For long term storage store at -20°C.  
Aliquot to avoid repeated freezing and thawing.

**Note**

This product contains sodium azide: a POISONOUS AND HAZARDOUS SUBSTANCE which should be handled by trained staff only.

## Applications

- Immunohistochemistry (Formalin/PFA-fixed paraffin-embedded sections)

Immunohistochemical staining of human salivary gland with C15orf57 polyclonal antibody (Cat # PAB23840) shows strong cytoplasmic positivity in glandular cells.

## Gene Info — C15orf57

**Entrez GeneID**[90416](#)**Protein Accession#**[Q9BV29](#)**Gene Name**

C15orf57

**Gene Alias**

CCDC32, FLJ25915, MGC20481

**Gene Description**

chromosome 15 open reading frame 57

**Gene Ontology**[Hyperlink](#)**Other Designations**

coiled-coil domain containing 32