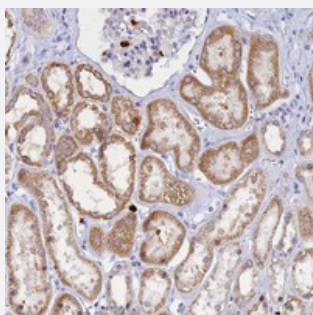


# SLC26A1 polyclonal antibody

Catalog # PAB23838      Size 100 uL

## Applications



### Immunohistochemistry (Formalin/PFA-fixed paraffin-embedded sections)

Immunohistochemical staining of human kidney with SLC26A1 polyclonal antibody (Cat # PAB23838) shows moderate cytoplasmic positivity in cells in tubules at 1:1000-1:2500 dilution.

## Specification

<b>Product Description</b>	Rabbit polyclonal antibody raised against recombinant SLC26A1.
<b>Immunogen</b>	Recombinant protein corresponding to amino acids of human SLC26A1.
<b>Sequence</b>	DTAFYEDATEFEGLVPEPGVRVFRFGGPLYANKDFFLRSLYSLTGLDAGCMAARRKEGGSETG VGEGRP
<b>Host</b>	Rabbit
<b>Reactivity</b>	Human
<b>Form</b>	Liquid
<b>Purification</b>	Antigen affinity purification
<b>Isotype</b>	IgG
<b>Recommend Usage</b>	Immunohistochemistry (1:1000-1:2500) The optimal working dilution should be determined by the end user.
<b>Storage Buffer</b>	In PBS, pH 7.2 (40% glycerol, 0.02% sodium azide)

**Storage Instruction**

Store at 4°C. For long term storage store at -20°C.  
Aliquot to avoid repeated freezing and thawing.

**Note**

This product contains sodium azide: a POISONOUS AND HAZARDOUS SUBSTANCE which should be handled by trained staff only.

## Applications

- Immunohistochemistry (Formalin/PFA-fixed paraffin-embedded sections)

Immunohistochemical staining of human kidney with SLC26A1 polyclonal antibody (Cat # PAB23838) shows moderate cytoplasmic positivity in cells in tubules at 1:1000-1:2500 dilution.

## Gene Info — SLC26A1

**Entrez GeneID**[10861](#)**Protein Accession#**[Q9H2B4](#)**Gene Name**

SLC26A1

**Gene Alias**

EDM4, SAT-1, SAT1

**Gene Description**

solute carrier family 26 (sulfate transporter), member 1

**Omim ID**[610130](#)**Gene Ontology**[Hyperlink](#)**Gene Summary**

This gene is a member of a family of sulfate/anion transporter genes. Family members are well conserved in their genomic (number and size of exons) and protein (aa length among species) structures, but have markedly different tissue expression patterns. This gene is primarily expressed in the liver, pancreas, and brain. Three splice variants that encode different isoforms have been identified. [provided by RefSeq]

**Other Designations**

solute carrier family 26, member 1|sulfate anion transporter AT1|sulfate transporter|sulfate/anion transporter SAT-1 protein