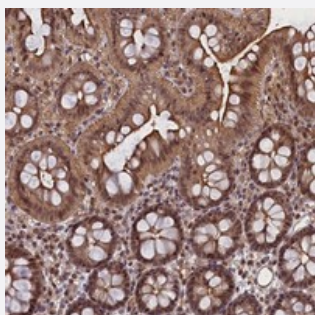


FCHO1 polyclonal antibody

Catalog # PAB23837 Size 100 uL

Applications



Immunohistochemistry (Formalin/PFA-fixed paraffin-embedded sections)

Immunohistochemical staining of human colon with FCHO1 polyclonal antibody (Cat # PAB23837) shows moderate cytoplasmic, nuclear and membranous positivity in glandular cells.

Specification

Product Description	Rabbit polyclonal antibody raised against recombinant FCHO1.
Immunogen	Recombinant protein corresponding to amino acids of human FCHO1.
Sequence	GAKAFRLPGLSRREPEPPAAVDFLEPDSGTCPEVDEEGFTVRPDVTQNSTAEPSRFSSSDS DFDDEEPRKFYVHIKPA
Host	Rabbit
Reactivity	Human
Form	Liquid
Purification	Antigen affinity purification
Isotype	IgG
Recommend Usage	Immunohistochemistry (1:200-1:500) The optimal working dilution should be determined by the end user.
Storage Buffer	In PBS, pH 7.2 (40% glycerol, 0.02% sodium azide)

Storage Instruction

Store at 4°C. For long term storage store at -20°C.
Aliquot to avoid repeated freezing and thawing.

Note

This product contains sodium azide: a POISONOUS AND HAZARDOUS SUBSTANCE which should be handled by trained staff only.

Applications

- Immunohistochemistry (Formalin/PFA-fixed paraffin-embedded sections)

Immunohistochemical staining of human colon with FCHO1 polyclonal antibody (Cat # PAB23837) shows moderate cytoplasmic, nuclear and membranous positivity in glandular cells.

Gene Info — FCHO1

Entrez GeneID [23149](#)

Protein Accession# [O14526](#)

Gene Name FCHO1

Gene Alias KIAA0290

Gene Description FCH domain only 1

Gene Ontology [Hyperlink](#)

Other Designations -