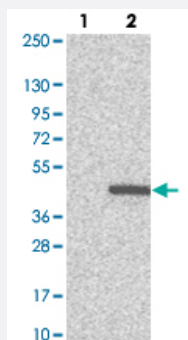


C16orf72 polyclonal antibody

Catalog # PAB23827 Size 100 uL

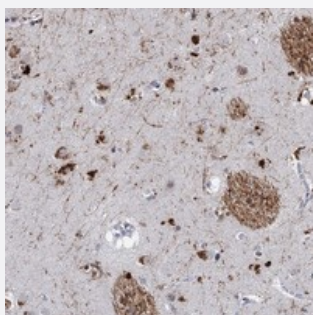
Applications



Western Blot (Transfected lysate)

Western blot analysis of Lane 1: Negative control (vector only transfected HEK293T lysate).

Lane 2: Over-expression lysate (Co-expressed with a C-terminal myc-DDK tag (~3.1 kDa) in mammalian HEK293T cells with C16orf72 polyclonal antibody (Cat # PAB23827).



Immunohistochemistry (Formalin/PFA-fixed paraffin-embedded sections)

Immunohistochemical staining of human lateral ventricle with C16orf72 polyclonal antibody (Cat # PAB23827) shows strong cytoplasmic positivity in neuronal cells.

Specification

Product Description	Rabbit polyclonal antibody raised against recombinant C16orf72.
Immunogen	Recombinant protein corresponding to amino acids of human C16orf72.
Sequence	KLWHLFQNSATAVAQLYKDRVCCQPGLSLWVPFQNAATAVTNLYKESVDTHQRSFDIGIQIGYQR RNKDVLA WVKRRRTIRREDLISFLC
Host	Rabbit
Reactivity	Human
Form	Liquid

Purification	Antigen affinity purification
Isotype	IgG
Recommend Usage	Immunohistochemistry (1:10-1:20) The optimal working dilution should be determined by the end user.
Storage Buffer	In PBS, pH 7.2 (40% glycerol, 0.02% sodium azide)
Storage Instruction	Store at 4°C. For long term storage store at -20°C. Aliquot to avoid repeated freezing and thawing.
Note	This product contains sodium azide: a POISONOUS AND HAZARDOUS SUBSTANCE which should be handled by trained staff only.

Applications

- Western Blot (Transfected lysate)

Western blot analysis of Lane 1: Negative control (vector only transfected HEK293T lysate).

Lane 2: Over-expression lysate (Co-expressed with a C-terminal myc-DDK tag (~3.1 kDa) in mammalian HEK293T cells with C16orf72 polyclonal antibody (Cat # PAB23827).

- Immunohistochemistry (Formalin/PFA-fixed paraffin-embedded sections)

Immunohistochemical staining of human lateral ventricle with C16orf72 polyclonal antibody (Cat # PAB23827) shows strong cytoplasmic positivity in neuronal cells.

Gene Info — C16orf72

Entrez GeneID	29035
Protein Accession#	Q14CZ0
Gene Name	C16orf72
Gene Alias	FLJ41272, PRO0149
Gene Description	chromosome 16 open reading frame 72
Gene Ontology	Hyperlink
Other Designations	hypothetical protein LOC29035