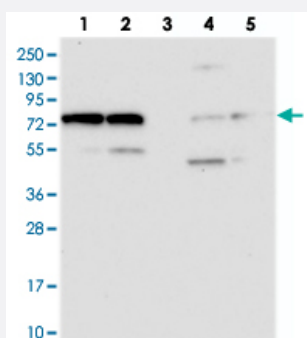


# KARS polyclonal antibody

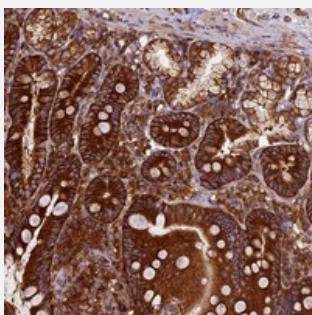
Catalog # PAB23825      Size 100 uL

## Applications



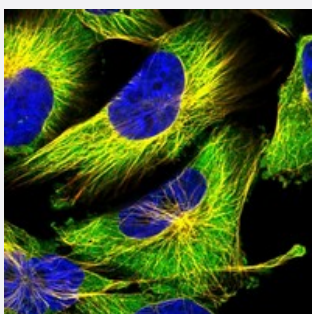
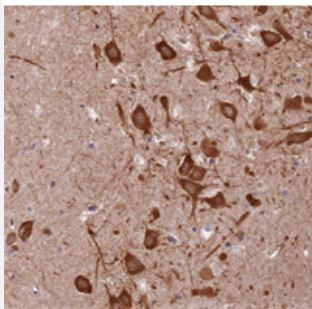
### Western Blot

Western blot analysis of Lane 1: RT-4, Lane 2: U-251 MG, Lane 3: Human Plasma, Lane 4: Liver, Lane 5: Tonsil with KARS polyclonal antibody (Cat # PAB23825) at 1:250-1:500 dilution.



### Immunohistochemistry (Formalin/PFA-fixed paraffin-embedded sections)

Immunohistochemical staining of human hippocampus with KARS polyclonal antibody (Cat # PAB23825) shows strong cytoplasmic positivity in neuronal cells at 1:50-1:200 dilution.



### Immunofluorescence

Immunofluorescent staining of human cell line U-251 MG with KARS polyclonal antibody (Cat # PAB23825) at 1-4 ug/mL dilution shows positivity in cytoplasm and cytoskeleton (microtubules).

## Specification

<b>Product Description</b>	Rabbit polyclonal antibody raised against recombinant KARS.
<b>Immunogen</b>	Recombinant protein corresponding to amino acids of human KARS.
<b>Sequence</b>	GLTERFELFVMKKEICNAYTELNDPMRQRQLFEEQAKAKAAGDDEAMFIDENFCTALEYGLPPTA GWGMGIDRVAMFLTDSNNIKEVLLFPAMKPEDKKENVATTDTEST
<b>Host</b>	Rabbit
<b>Reactivity</b>	Human
<b>Form</b>	Liquid
<b>Purification</b>	Antigen affinity purification
<b>Isotype</b>	IgG
<b>Recommend Usage</b>	Immunohistochemistry (1:50-1:200) Western Blot (1:250-1:500) Immunofluorescence (1-4 ug/mL) The optimal working dilution should be determined by the end user.
<b>Storage Buffer</b>	In PBS, pH 7.2 (40% glycerol, 0.02% sodium azide)
<b>Storage Instruction</b>	Store at 4°C. For long term storage store at -20°C. Aliquot to avoid repeated freezing and thawing.
<b>Note</b>	This product contains sodium azide: a POISONOUS AND HAZARDOUS SUBSTANCE which should be handled by trained staff only.

## Applications

- Western Blot

Western blot analysis of Lane 1: RT-4, Lane 2: U-251 MG, Lane 3: Human Plasma, Lane 4: Liver, Lane 5: Tonsil with KARS polyclonal antibody (Cat # PAB23825) at 1:250-1:500 dilution.

- Immunohistochemistry (Formalin/PFA-fixed paraffin-embedded sections)

Immunohistochemical staining of human hippocampus with KARS polyclonal antibody (Cat # PAB23825) shows strong cytoplasmic positivity in neuronal cells at 1:50-1:200 dilution.

- Immunofluorescence

Immunofluorescent staining of human cell line U-251 MG with KARS polyclonal antibody (Cat # PAB23825) at 1-4 ug/mL dilution shows positivity in cytoplasm and cytoskeleton (microtubules).

## Gene Info — KARS

Entrez GeneID [3735](#)

Protein Accession# [Q15046](#)

Gene Name KARS

Gene Alias KARS2, KIAA0070, KRS

Gene Description lysyl-tRNA synthetase

Omim ID [601421](#)

Gene Ontology [Hyperlink](#)

**Gene Summary** Aminoacyl-tRNA synthetases are a class of enzymes that charge tRNAs with their cognate amino acids. Lysyl-tRNA synthetase is a homodimer localized to the cytoplasm which belongs to the class II family of tRNA synthetases. It has been shown to be a target of autoantibodies in the human autoimmune diseases, polymyositis or dermatomyositis. Alternatively spliced transcript variants encoding different isoforms have been found for this gene. [provided by RefSeq]

**Other Designations** lysine tRNA ligase

## Pathway

- [Aminoacyl-tRNA biosynthesis](#)

## Disease

- [Genetic Predisposition to Disease](#)
- [HIV Infections](#)