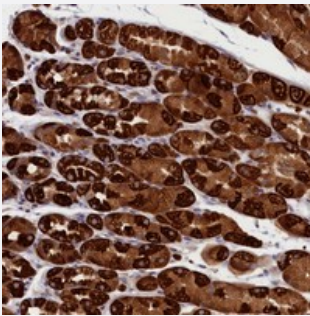


CEP44 polyclonal antibody

Catalog # PAB23819 Size 100 uL

Applications



Immunohistochemistry (Formalin/PFA-fixed paraffin-embedded sections)

Immunohistochemical staining of human stomach with CEP44 polyclonal antibody (Cat # PAB23819) shows strong cytoplasmic positivity in glandular cells at 1:200-1:500 dilution.

Specification

Product Description	Rabbit polyclonal antibody raised against recombinant CEP44.
Immunogen	Recombinant protein corresponding to amino acids of human CEP44.
Sequence	ASCSDMDLLNPHRKSEVERPASIP LSSGYSTASSDSTPRASTVNYCGLNEISEETTIQKMERMKK MFEETAELLKCPNHY
Host	Rabbit
Reactivity	Human
Form	Liquid
Purification	Antigen affinity purification
Isotype	IgG
Recommend Usage	Immunohistochemistry (1:200-1:500) The optimal working dilution should be determined by the end user.
Storage Buffer	In PBS, pH 7.2 (40% glycerol, 0.02% sodium azide)

Storage Instruction

Store at 4°C. For long term storage store at -20°C.
Aliquot to avoid repeated freezing and thawing.

Note

This product contains sodium azide: a POISONOUS AND HAZARDOUS SUBSTANCE which should be handled by trained staff only.

Applications

- Immunohistochemistry (Formalin/PFA-fixed paraffin-embedded sections)

Immunohistochemical staining of human stomach with CEP44 polyclonal antibody (Cat # PAB23819) shows strong cytoplasmic positivity in glandular cells at 1:200-1:500 dilution.

Gene Info — CEP44

Entrez GeneID[80817](#)**Protein Accession#**[Q9C0F1](#)**Gene Name**

CEP44

Gene Alias

KIAA1712, PS1TP3

Gene Description

centrosomal protein 44kDa

Gene Ontology[Hyperlink](#)**Other Designations**

HBV PreS1-transactivated protein 3; centrosomal protein of 44 kDa