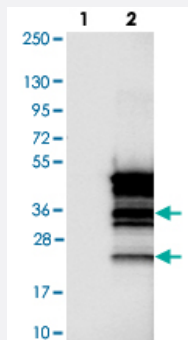


C16orf48 polyclonal antibody

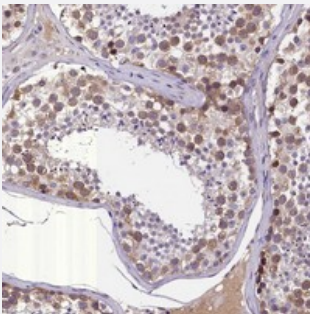
Catalog # PAB23811 Size 100 uL

Applications



Western Blot (Transfected lysate)

Western blot analysis of Lane 1: Negative control (vector only transfected HEK293T lysate).
Lane 2: Over-expression lysate (Co-expressed with a C-terminal myc-DDK tag (~3.1 kDa) in mammalian HEK293T cells with C16orf48 polyclonal antibody (Cat # PAB23811).



Immunohistochemistry (Formalin/PFA-fixed paraffin-embedded sections)

Immunohistochemical staining of human testis with C16orf48 polyclonal antibody (Cat # PAB23811) shows moderate cytoplasmic positivity in cells in seminiferous ducts at 1:200-1:500 dilution.

Specification

Product Description	Rabbit polyclonal antibody raised against recombinant C16orf48.
Immunogen	Recombinant protein corresponding to amino acids of human C16orf48.
Sequence	QVLAQVLEQQRQAQEHYNATQKGVPHYLLERRDLWRREAEARKQSQPDAMP PGHTRMPEN QRLET LTKL
Host	Rabbit
Reactivity	Human
Form	Liquid

Purification	Antigen affinity purification
Isotype	IgG
Recommend Usage	Immunohistochemistry (1:200-1:500) The optimal working dilution should be determined by the end user.
Storage Buffer	In PBS, pH 7.2 (40% glycerol, 0.02% sodium azide)
Storage Instruction	Store at 4°C. For long term storage store at -20°C. Aliquot to avoid repeated freezing and thawing.
Note	This product contains sodium azide: a POISONOUS AND HAZARDOUS SUBSTANCE which should be handled by trained staff only.

Applications

- Western Blot (Transfected lysate)

Western blot analysis of Lane 1: Negative control (vector only transfected HEK293T lysate).

Lane 2: Over-expression lysate (Co-expressed with a C-terminal myc-DDK tag (~3.1 kDa) in mammalian HEK293T cells with C16orf48 polyclonal antibody (Cat # PAB23811).

- Immunohistochemistry (Formalin/PFA-fixed paraffin-embedded sections)

Immunohistochemical staining of human testis with C16orf48 polyclonal antibody (Cat # PAB23811) shows moderate cytoplasmic positivity in cells in seminiferous ducts at 1:200-1:500 dilution.

Gene Info — C16orf48

Entrez GeneID	84080
Protein Accession#	Q9H0I2
Gene Name	C16orf48
Gene Alias	DAKV6410, DKFZp434A1319
Gene Description	chromosome 16 open reading frame 48
Gene Ontology	Hyperlink
Other Designations	hypothetical protein LOC84080