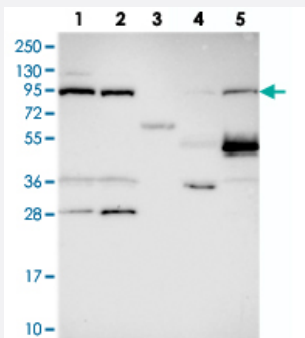


# TELO2 polyclonal antibody

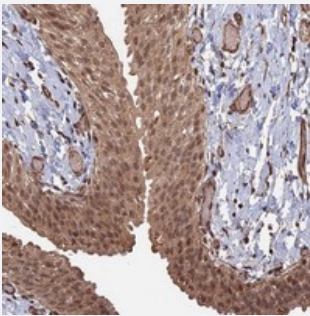
Catalog # PAB23808      Size 100 uL

## Applications



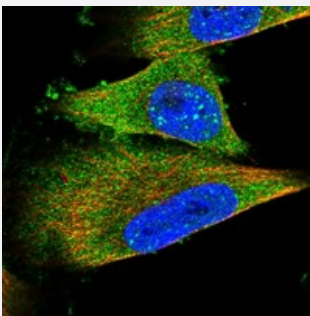
### Western Blot

Western blot analysis of Lane 1: RT-4, Lane 2: U-251 MG, Lane 3: Human Plasma, Lane 4: Liver, Lane 5: Tonsil with TELO2 polyclonal antibody (Cat # PAB23808) at 1:250-1:500 dilution.



### Immunohistochemistry (Formalin/PFA-fixed paraffin-embedded sections)

Immunohistochemical staining of human urinary bladder with TELO2 polyclonal antibody (Cat # PAB23808) shows cytoplasmic and nuclear positivity in urothelial cells at 1:50-1:200 dilution.



### Immunofluorescence

Immunofluorescent staining of human cell line U-251 MG with TELO2 polyclonal antibody (Cat # PAB23808) at 1-4 ug/mL dilution shows positivity in nucleus and cytoplasm.

## Specification

### Product Description

Rabbit polyclonal antibody raised against recombinant TELO2.

### Immunogen

Recombinant protein corresponding to amino acids of human TELO2.

Sequence	SKAVLICLAQLGEPELRDSRDELLASMMAGVKCRLDSSLPPVRRRLGMVAEVSARIHPEGPPLK FQYEEDELSLELLALASPQPAGDGASEAGTSLVPATA
Host	Rabbit
Reactivity	Human
Form	Liquid
Purification	Antigen affinity purification
Isotype	IgG
Recommend Usage	Immunohistochemistry (1:50-1:200) Western Blot (1:250-1:500) Immunofluorescence (1-4 ug/mL) The optimal working dilution should be determined by the end user.
Storage Buffer	In PBS, pH 7.2 (40% glycerol, 0.02% sodium azide)
Storage Instruction	Store at 4°C. For long term storage store at -20°C. Aliquot to avoid repeated freezing and thawing.
Note	This product contains sodium azide: a POISONOUS AND HAZARDOUS SUBSTANCE which should be handled by trained staff only.

## Applications

- Western Blot

Western blot analysis of Lane 1: RT-4, Lane 2: U-251 MG, Lane 3: Human Plasma, Lane 4: Liver, Lane 5: Tonsil with TELO2 polyclonal antibody (Cat # PAB23808) at 1:250-1:500 dilution.

- Immunohistochemistry (Formalin/PFA-fixed paraffin-embedded sections)

Immunohistochemical staining of human urinary bladder with TELO2 polyclonal antibody (Cat # PAB23808) shows cytoplasmic and nuclear positivity in urothelial cells at 1:50-1:200 dilution.

- Immunofluorescence

Immunofluorescent staining of human cell line U-251 MG with TELO2 polyclonal antibody (Cat # PAB23808) at 1-4 ug/mL dilution shows positivity in nucleus and cytoplasm.

## Gene Info — TELO2

Entrez GeneID [9894](#)

Protein Accession# [Q9Y4R8](#)

Gene Name	TELO2
Gene Alias	CLK2, DKFZp434A073, FLJ10924, KIAA0683, TEL2, c305C8.3, hCLK2
Gene Description	TEL2, telomere maintenance 2, homolog (S. cerevisiae)
Omim ID	<a href="#">611140</a>
Gene Ontology	<a href="#">Hyperlink</a>
Gene Summary	This gene encodes a protein that functions as an S-phase checkpoint protein in the cell cycle. The protein may also play a role in DNA repair
Other Designations	TEL2, telomere maintenance 2, homolog