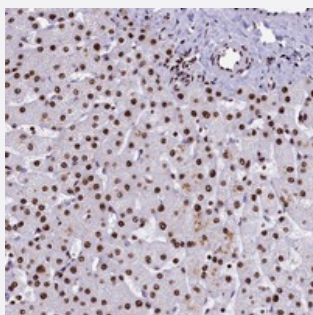


SRRM2 polyclonal antibody

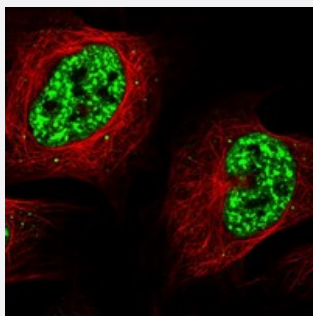
Catalog # PAB23801 Size 100 uL

Applications



Immunohistochemistry (Formalin/PFA-fixed paraffin-embedded sections)

Immunohistochemical staining of human liver with SRRM2 polyclonal antibody (Cat # PAB23801) shows strong nuclear positivity in hepatocytes.



Immunofluorescence

Immunofluorescent staining of human cell line U-2 OS with SRRM2 polyclonal antibody (Cat # PAB23801) at 1-4 ug/mL dilution shows positivity in nucleus but not nucleoli.

Specification

Product Description	Rabbit polyclonal antibody raised against recombinant SRRM2.
Immunogen	Recombinant protein corresponding to amino acids of human SRRM2.
Sequence	RSRSSSPVTELASRSPIRQDRGEFSASPMLKSGMSPEQSRFQSDSSSYPTVDSNSLLGQSRLET AESKEKMALPPQEDATASPPRQKDKFSPFPVQDRPESSLVFK
Host	Rabbit
Reactivity	Human
Form	Liquid

Purification	Antigen affinity purification
Isotype	IgG
Recommend Usage	Immunohistochemistry (1:500-1:1000) Immunofluorescence (1-4 ug/mL) The optimal working dilution should be determined by the end user.
Storage Buffer	In PBS, pH 7.2 (40% glycerol, 0.02% sodium azide)
Storage Instruction	Store at 4°C. For long term storage store at -20°C. Aliquot to avoid repeated freezing and thawing.
Note	This product contains sodium azide: a POISONOUS AND HAZARDOUS SUBSTANCE which should be handled by trained staff only.

Applications

- Immunohistochemistry (Formalin/PFA-fixed paraffin-embedded sections)

Immunohistochemical staining of human liver with SRRM2 polyclonal antibody (Cat # PAB23801) shows strong nuclear positivity in hepatocytes.

- Immunofluorescence

Immunofluorescent staining of human cell line U-2 OS with SRRM2 polyclonal antibody (Cat # PAB23801) at 1-4 ug/mL dilution shows positivity in nucleus but not nucleoli.

Gene Info — SRRM2

Entrez GeneID	23524
Protein Accession#	Q9UQ35
Gene Name	SRRM2
Gene Alias	300-KD, CWF21, DKFZp686O15166, FLJ21926, FLJ22250, KIAA0324, MGC40295, SRL300, SRm300
Gene Description	serine/arginine repetitive matrix 2
Omim ID	606032
Gene Ontology	Hyperlink
Other Designations	RNA binding protein splicing coactivator subunit SRm300