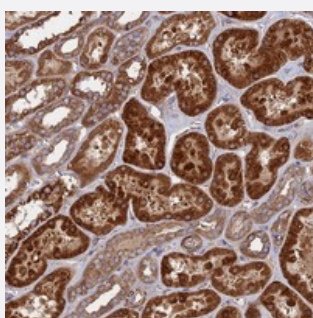


TELO2 polyclonal antibody

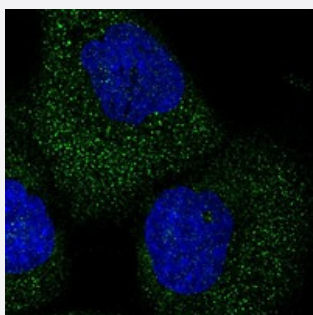
Catalog # PAB23788 Size 100 uL

Applications



Immunohistochemistry (Formalin/PFA-fixed paraffin-embedded sections)

Immunohistochemical staining of human kidney with TELO2 polyclonal antibody (Cat # PAB23788) shows strong cytoplasmic positivity in cells in tubules.



Immunofluorescence

Immunofluorescent staining of human cell line A-431 with TELO2 polyclonal antibody (Cat # PAB23788) at 1-4 ug/mL dilution shows positivity in cytoplasm.

Specification

Product Description	Rabbit polyclonal antibody raised against recombinant TELO2.
Immunogen	Recombinant protein corresponding to amino acids of human TELO2.
Sequence	VPYDMSGDRELKSSKAPAYVRDCVEALTTSEDIRWEAALRALEGLVYRSPTATREVSVELAKVL LHLEEKTCVVGFAGLRQRALVAVTVTDPAPVADYLT SQFYALNYS
Host	Rabbit
Reactivity	Human
Form	Liquid

Purification	Antigen affinity purification
Isotype	IgG
Recommend Usage	Immunohistochemistry (1:50-1:200) Immunofluorescence (1-4 ug/mL) The optimal working dilution should be determined by the end user.
Storage Buffer	In PBS, pH 7.2 (40% glycerol, 0.02% sodium azide)
Storage Instruction	Store at 4°C. For long term storage store at -20°C. Aliquot to avoid repeated freezing and thawing.
Note	This product contains sodium azide: a POISONOUS AND HAZARDOUS SUBSTANCE which should be handled by trained staff only.

Applications

- Immunohistochemistry (Formalin/PFA-fixed paraffin-embedded sections)

Immunohistochemical staining of human kidney with TELO2 polyclonal antibody (Cat # PAB23788) shows strong cytoplasmic positivity in cells in tubules.

- Immunofluorescence

Immunofluorescent staining of human cell line A-431 with TELO2 polyclonal antibody (Cat # PAB23788) at 1-4 ug/mL dilution shows positivity in cytoplasm.

Gene Info — TELO2

Entrez GeneID	9894
Protein Accession#	Q9Y4R8
Gene Name	TELO2
Gene Alias	CLK2, DKFZp434A073, FLJ10924, KIAA0683, TEL2, c305C8.3, hCLK2
Gene Description	TEL2, telomere maintenance 2, homolog (S. cerevisiae)
Omim ID	611140
Gene Ontology	Hyperlink
Gene Summary	This gene encodes a protein that functions as an S-phase checkpoint protein in the cell cycle. The protein may also play a role in DNA repair
Other Designations	TEL2, telomere maintenance 2, homolog