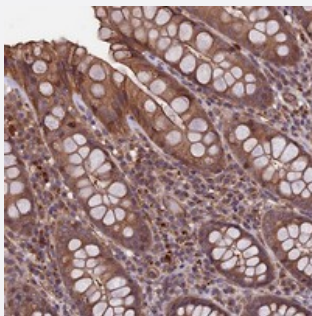


SLC9A5 polyclonal antibody

Catalog # PAB23781 Size 100 uL

Applications



Immunohistochemistry (Formalin/PFA-fixed paraffin-embedded sections)

Immunohistochemical staining of human rectum with SLC9A5 polyclonal antibody (Cat # PAB23781) shows moderate cytoplasmic and membranous positivity in glandular cells.

Specification

Product Description	Rabbit polyclonal antibody raised against recombinant SLC9A5.
Immunogen	Recombinant protein corresponding to amino acids of human SLC9A5.
Sequence	GHVLSSTGLTLPSPSRNSVAETSVTNLLRESGSGACLDLQVIDTVRSGRDREDAVMHHLLCGG LYKPRRRYKASCSRHFISEDAQERQDKEVFQQNMKRRL
Host	Rabbit
Reactivity	Human
Form	Liquid
Purification	Antigen affinity purification
Isotype	IgG
Recommend Usage	Immunohistochemistry (1:500-1:1000) The optimal working dilution should be determined by the end user.
Storage Buffer	In PBS, pH 7.2 (40% glycerol, 0.02% sodium azide)

Storage Instruction

Store at 4°C. For long term storage store at -20°C.
Aliquot to avoid repeated freezing and thawing.

Note

This product contains sodium azide: a POISONOUS AND HAZARDOUS SUBSTANCE which should be handled by trained staff only.

Applications

- Immunohistochemistry (Formalin/PFA-fixed paraffin-embedded sections)

Immunohistochemical staining of human rectum with SLC9A5 polyclonal antibody (Cat # PAB23781) shows moderate cytoplasmic and membranous positivity in glandular cells.

Gene Info — SLC9A5

Entrez GeneID[6553](#)**Protein Accession#**[Q14940](#)**Gene Name**

SLC9A5

Gene Alias

NHE5

Gene Description

solute carrier family 9 (sodium/hydrogen exchanger), member 5

Omim ID[600477](#)**Gene Ontology**[Hyperlink](#)**Gene Summary**

O

Other Designations

solute carrier family 9 (sodium/hydrogen exchanger), isoform 5