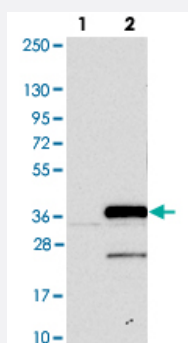


PSMF1 polyclonal antibody

Catalog # PAB23777

Size 100 uL

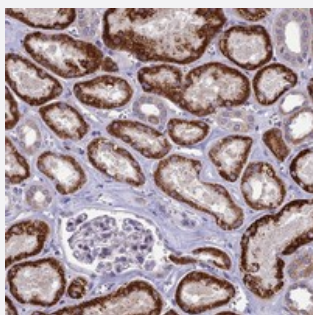
Applications



Western Blot (Transfected lysate)

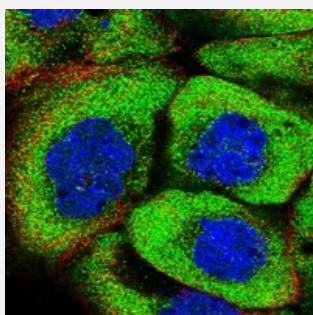
Western blot analysis of Lane 1: Negative control (vector only transfected HEK293T lysate).

Lane 2: Over-expression lysate (Co-expressed with a C-terminal myc-DDK tag (~3.1 kDa) in mammalian HEK293T cells with PSMF1 polyclonal antibody (Cat # PAB23777).



Immunohistochemistry (Formalin/PFA-fixed paraffin-embedded sections)

Immunohistochemical staining of human kidney with PSMF1 polyclonal antibody (Cat # PAB23777) shows strong cytoplasmic positivity in cells in tubules at 1:20-1:50 dilution.



Immunofluorescence

Immunofluorescent staining of human cell line A-431 with PSMF1 polyclonal antibody (Cat # PAB23777) at 1-4 ug/mL dilution shows positivity in cytoplasm.

Specification

Product Description

Rabbit polyclonal antibody raised against recombinant PSMF1.

Immunogen

Recombinant protein corresponding to amino acids of human PSMF1.

Sequence	LVCFLHWEVVTHGYCGLGVGDQPGPNDDKKSELLPAGWNNNKDLVLRYEYKDGSRKLLVKAITVE
Host	Rabbit
Reactivity	Human
Form	Liquid
Purification	Antigen affinity purification
Isotype	IgG
Recommend Usage	Immunohistochemistry (1:20-1:50) Immunofluorescence (1-4 ug/mL) The optimal working dilution should be determined by the end user.
Storage Buffer	In PBS, pH 7.2 (40% glycerol, 0.02% sodium azide)
Storage Instruction	Store at 4°C. For long term storage store at -20°C. Aliquot to avoid repeated freezing and thawing.
Note	This product contains sodium azide: a POISONOUS AND HAZARDOUS SUBSTANCE which should be handled by trained staff only.

Applications

- Western Blot (Transfected lysate)

Western blot analysis of Lane 1: Negative control (vector only transfected HEK293T lysate).

Lane 2: Over-expression lysate (Co-expressed with a C-terminal myc-DDK tag (~3.1 kDa) in mammalian HEK293T cells with PSMF1 polyclonal antibody (Cat # PAB23777).

- Immunohistochemistry (Formalin/PFA-fixed paraffin-embedded sections)

Immunohistochemical staining of human kidney with PSMF1 polyclonal antibody (Cat # PAB23777) shows strong cytoplasmic positivity in cells in tubules at 1:20-1:50 dilution.

- Immunofluorescence

Immunofluorescent staining of human cell line A-431 with PSMF1 polyclonal antibody (Cat # PAB23777) at 1-4 ug/mL dilution shows positivity in cytoplasm.

Gene Info — PSMF1

Entrez GeneID [9491](#)

Protein Accession# [Q92530](#)

Gene Name	PSMF1
Gene Alias	PI31
Gene Description	proteasome (prosome, macropain) inhibitor subunit 1 (PI31)
Gene Ontology	Hyperlink
Gene Summary	<p>The 26S proteasome is a multicatalytic proteinase complex with a highly ordered structure composed of 2 complexes, a 20S core and a 19S regulator. The 20S core is composed of 4 rings of 28 non-identical subunits; 2 rings are composed of 7 alpha subunits and 2 rings are composed of 7 beta subunits. The 19S regulator is composed of a base, which contains 6 ATPase subunits and 2 non-ATPase subunits, and a lid, which contains up to 10 non-ATPase subunits. Proteasomes are distributed throughout eukaryotic cells at a high concentration and cleave peptides in an ATP/ubiquitin-dependent process in a non-lysosomal pathway. An essential function of a modified proteasome, the immunoproteasome, is the processing of class I MHC peptides. This gene encodes a protein that inhibits the activation of the proteasome by the 11S and 19S regulators. Alternative transcripts variants have been identified for this gene. [provided by RefSeq]</p>
Other Designations	proteasome inhibitor hP131 subunit proteasome inhibitor subunit 1

Pathway

- [Proteasome](#)