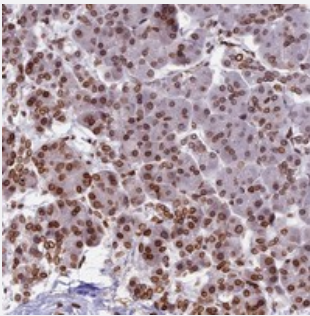


# PTCHD4 polyclonal antibody

Catalog # PAB23775      Size 100 uL

## Applications



### Immunohistochemistry (Formalin/PFA-fixed paraffin-embedded sections)

Immunohistochemical staining of human pancreas with PTCHD4 polyclonal antibody (Cat # PAB23775) shows strong nuclear membrane positivity in exocrine glandular cells at 1:200-1:500 dilution.

## Specification

<b>Product Description</b>	Rabbit polyclonal antibody raised against recombinant PTCHD4.
<b>Immunogen</b>	Recombinant protein corresponding to amino acids of human PTCHD4.
<b>Sequence</b>	KKRAKRKEREIEICIEIQENPDHVTTV
<b>Host</b>	Rabbit
<b>Reactivity</b>	Human
<b>Form</b>	Liquid
<b>Purification</b>	Antigen affinity purification
<b>Isotype</b>	IgG
<b>Recommend Usage</b>	Immunohistochemistry (1:200-1:500) The optimal working dilution should be determined by the end user.
<b>Storage Buffer</b>	In PBS, pH 7.2 (40% glycerol, 0.02% sodium azide)
<b>Storage Instruction</b>	Store at 4°C. For long term storage store at -20°C. Aliquot to avoid repeated freezing and thawing.

**Note**

This product contains sodium azide: a POISONOUS AND HAZARDOUS SUBSTANCE which should be handled by trained staff only.

## Applications

- Immunohistochemistry (Formalin/PFA-fixed paraffin-embedded sections)

Immunohistochemical staining of human pancreas with PTCHD4 polyclonal antibody (Cat # PAB23775) shows strong nuclear membrane positivity in exocrine glandular cells at 1:200-1:500 dilution.

## Gene Info — PTCHD4

**Entrez GeneID** [442213](#)

**Protein Accession#** [Q6ZW05](#)

**Gene Name** PTCHD4

**Gene Alias** RP3-402H5.2, C6orf138, dJ402H5.2

**Gene Description** patched domain containing 4

**Gene Ontology** [Hyperlink](#)

**Other Designations** patched domain-containing protein 4; patched domain-containing protein C6orf138

## Disease

- [Cardiovascular Diseases](#)
- [Diabetes Mellitus](#)
- [Edema](#)
- [Tobacco Use Disorder](#)