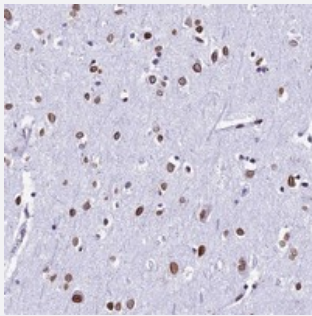


C12orf26 polyclonal antibody

Catalog # PAB23767 Size 100 uL

Applications



Immunohistochemistry (Formalin/PFA-fixed paraffin-embedded sections)

Immunohistochemical staining of human cerebral cortex with C12orf26 polyclonal antibody (Cat # PAB23767) shows strong nuclear membranous positivity in neuronal cells and glial cells at 1:20-1:50 dilution.

Specification

| | |
|---------------------|--|
| Product Description | Rabbit polyclonal antibody raised against recombinant C12orf26. |
| Immunogen | Recombinant protein corresponding to amino acids of human C12orf26. |
| Sequence | MCHYLKEERWCCGRNARMSACLALERVAAGQGLPTESLFYRAVLQDIKDCYGITKCDRHVGKIY SKCSSFLDYVRRSLKK |
| Host | Rabbit |
| Reactivity | Human |
| Form | Liquid |
| Purification | Antigen affinity purification |
| Isotype | IgG |
| Recommend Usage | Immunohistochemistry (1:20-1:50) The optimal working dilution should be determined by the end user. |
| Storage Buffer | In PBS, pH 7.2 (40% glycerol, 0.02% sodium azide) |

Storage Instruction

Store at 4°C. For long term storage store at -20°C.
Aliquot to avoid repeated freezing and thawing.

Note

This product contains sodium azide: a POISONOUS AND HAZARDOUS SUBSTANCE which should be handled by trained staff only.

Applications

- Immunohistochemistry (Formalin/PFA-fixed paraffin-embedded sections)

Immunohistochemical staining of human cerebral cortex with C12orf26 polyclonal antibody (Cat # PAB23767) shows strong nuclear membranous positivity in neuronal cells and glial cells at 1:20-1:50 dilution.

Gene Info — C12orf26

Entrez GeneID[84190](#)**Protein Accession#**[Q8N6Q8](#)**Gene Name**

C12orf26

Gene Alias

FLJ22789

Gene Description

chromosome 12 open reading frame 26

Gene Ontology[Hyperlink](#)**Other Designations**

hypothetical protein LOC84190

Disease

- [Tobacco Use Disorder](#)